

# STORM

DEVICE MANAGEMENT



REMOTELY AND EFFICIENTLY MANAGE ALL YOUR RFID DEVICES,  
EVEN IN MULTIPLE LOCATIONS!



# WHY YOU NEED STORM

When you have **many RFID devices**, installed in **multiple locations**, you have to face many challenges and issues:

- data losses;
- downtimes;
- difficulty to resolve issues remotely, so you often need to go on site;
- software and firmware updates cannot be done remotely easily so you need to handle updates one by one.



# WHAT STORM IS AND WHAT IT DOES

Storm is a **web platform** that allows to **remotely** manage and monitor all RFID devices installed in multiple locations without walking away from your desk! Its **main functionalities** are:

Device  
Monitoring

Configuration  
Management

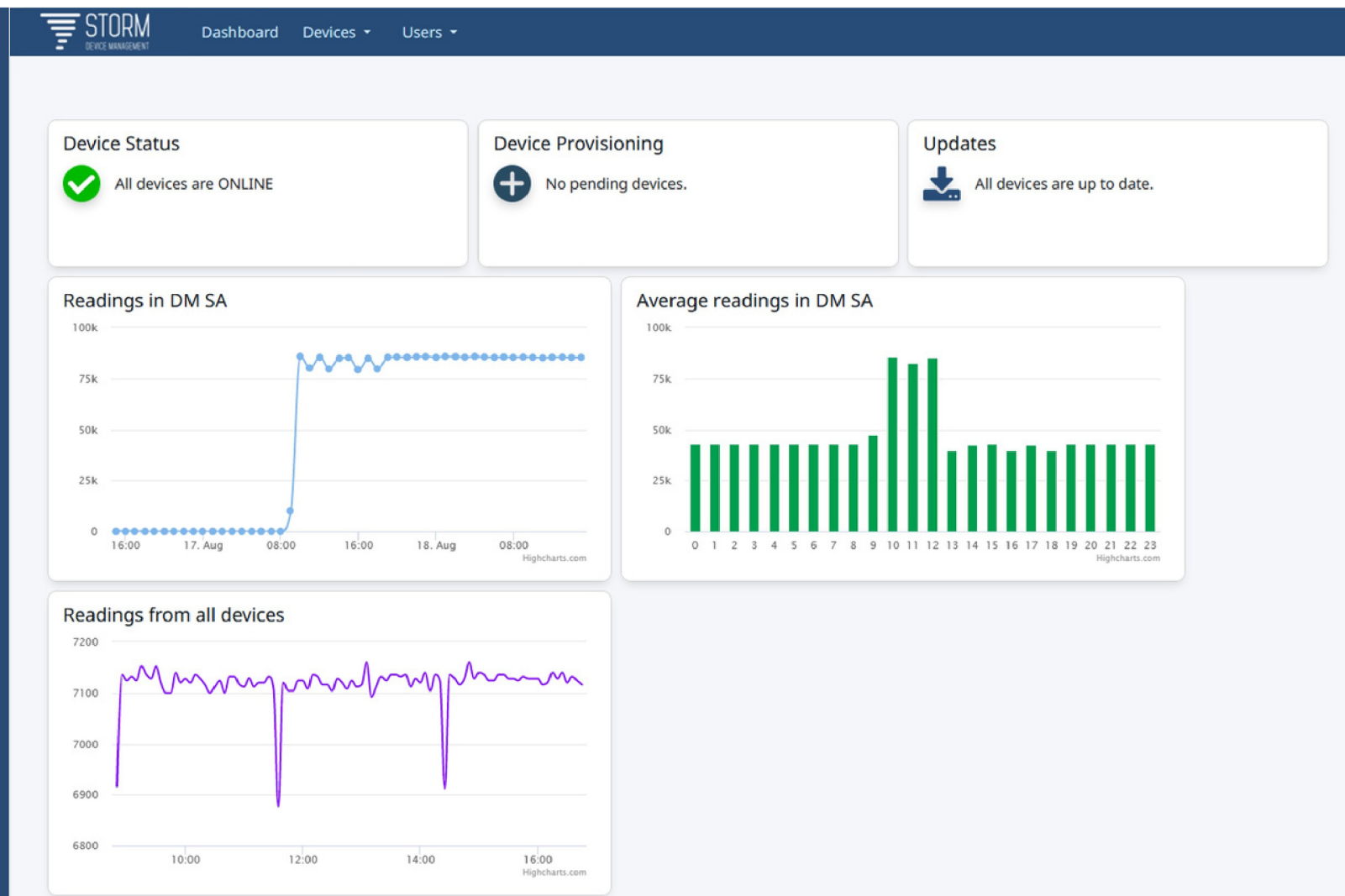
Preventive  
Maintenance

Remote  
Support



# MONITORING

STORM's fully customizable dashboard allows to monitor the **status** of all RFID readers and their **activity** through metrics. Monitoring **automatically 24/7** all the RFID devices, if configured thresholds are exceeded, STORM triggers an **alarm** which is suddenly displayed on the web UI and sends a **notification** to the configured recipients.





# CONFIGURATION MANAGEMENT

A simple, device provisioning process allows to securely **add RFID devices to customer's account and assign them to a location**. Locations are also **managed through the UI** and RFID readers can be easily filtered and selected based on name, location or other properties.

The search can be **saved as user's favourites** so to create dynamic groups that can be recalled at any time, while alarms and connection status are displayed to **immediately recognize those RFID readers that require attention**.

**Every parameter** of each RFID reader can be **remotely configured** through STORM and settings can be applied to multiple RFID readers at the same time.

The user can also **easily compare multiple RFID readers set-up** and the parameters view can be customized and **saved as user's favourite**, while **configuration pre-sets** can be created for quick set-up of multiple RFID readers. Monitoring the RFID equipment allows to **quickly spot issues** and **prevent extensive downtime and data loss**.

Dashboard Devices Users							
Search device by ...				Config	Update	Alarms	Andrea Carbonetti
	MAC Address	Reader name	Site name	Address	Operating mode	Alarms	Status
<input checked="" type="checkbox"/>	00:16:25:12:32:71	<a href="#">Fourth Scanner</a>	DM PnS	6814 Lamone, Switzerland	EXPERT		ONLINE
<input checked="" type="checkbox"/>	00:16:25:13:F2:98	<a href="#">R220 ETSI 192.168.0.152</a>	DM PnS	6814 Lamone, Switzerland	EXPERT		ONLINE
<input checked="" type="checkbox"/>	00:16:25:11:4B:73	<a href="#">R420 ETSI 192.168.0.78</a>	DM PnS	6814 Lamone, Switzerland	EXPERT		ONLINE
<input checked="" type="checkbox"/>	00:16:25:11:5E:83	<a href="#">R420 FCC 192.168.0.225</a>	DM PnS	6814 Lamone, Switzerland	EXPERT		ONLINE
<input checked="" type="checkbox"/>	00:16:25:13:E3:7E	<a href="#">ETSI R120 192.168.0.238</a>	DM PnS	6814 Lamone, Switzerland	EXPERT		ONLINE

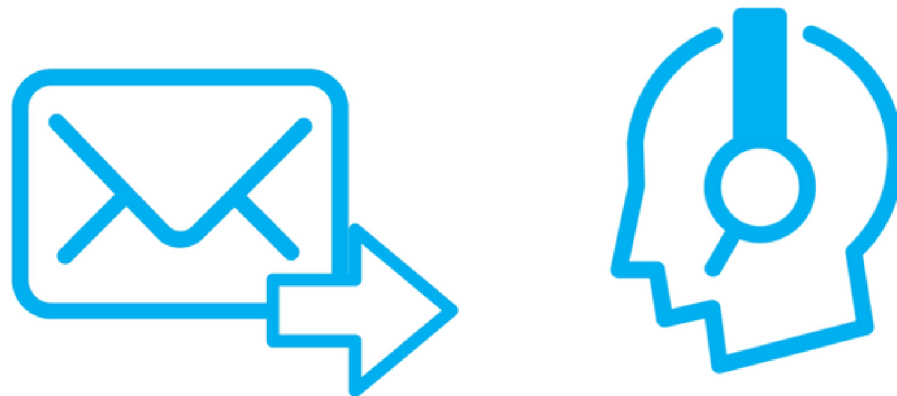
# PREVENTIVE MAINTENANCE

RFID devices' **firmware and software** can be **updated** through STORM **without being on-site** and the updates can be **scheduled at a convenient time**.

Since STORM allows **remote control** of all the RFID readers, there is **no need to be on-site and directly connected** to each RFID reader to troubleshoot it or to set up remote desktop sessions.

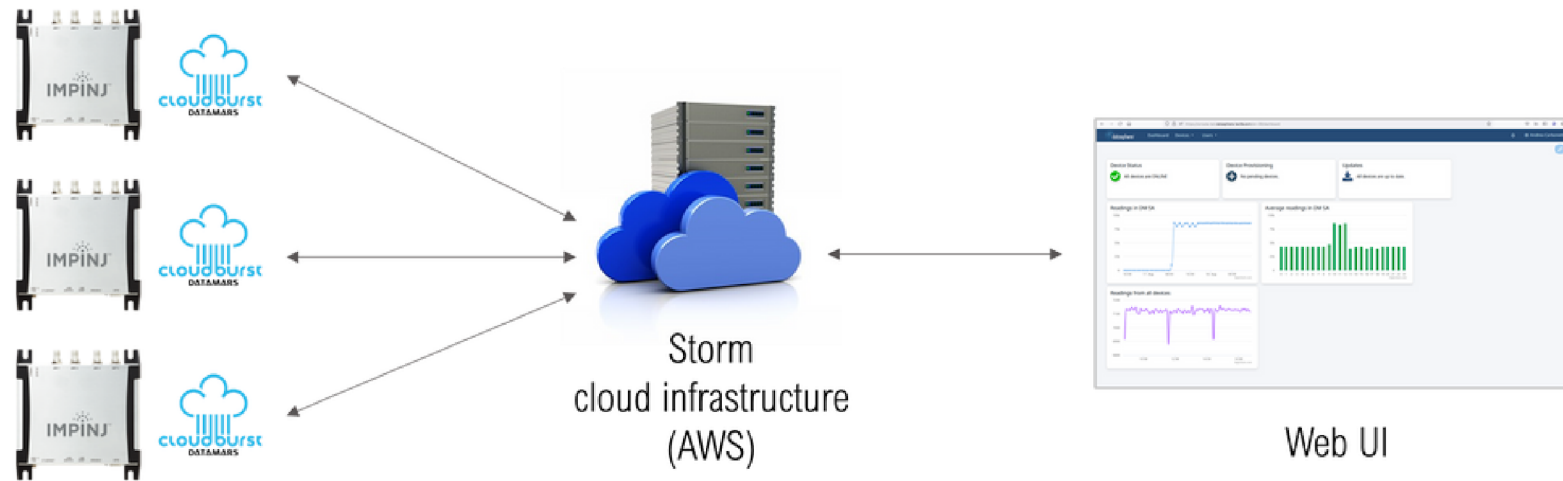
# REMOTE SUPPORT

In case the customer need an additional help, STORM allows to **send a request to the Datamars service and support team** that will have temporary access to the specific RFID readers, fix the issue and then close the request with **no more possibility to access to those RFID readers**.





# ARCHITECTURE AND MINIMUM REQUIREMENTS



**Cloudburst** shall be installed on the RFID readers, while the RFID readers shall be connected to the **local network** and have **Internet access**. For enhanced security, Internet access can be restricted to the STORM domain only.

## SECURITY

STORM **does not require** any external access to your network, VPNs, tunnels, inbound firewall rules or open ports.

The connections between the readers and STORM platform are **secured and encrypted**. Each reader is securely connected to your account through a provisioning procedure where the platform **generates a certificate** for each RFID reader with no chance that other STORM users can access your readers.

# TAKE CONTROL OF YOUR RFID DEVICES WITH



SEE THE  
VIDEO

REQUEST YOUR  
FREE TRIAL

