

DATAMARS

TEXTILE ID

R-IN1300 MID

HF – multi read

QUICK START GUIDE

Version 3.0



DATAMARS

Corporate Headquarters - Textile ID business division:

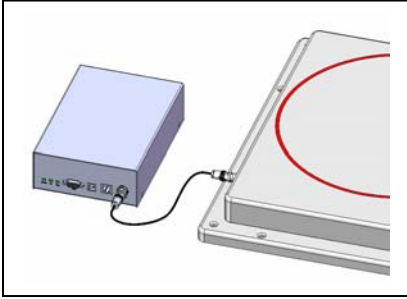
Via Industria 16
6814 Lamone
Switzerland
Phone: +41 91 935 73 80
Fax: +41 91 945 03 30

textile-id@datamars.com

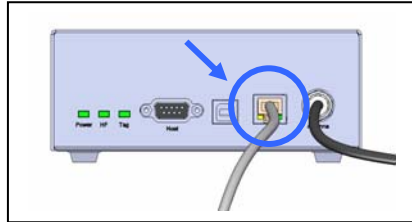
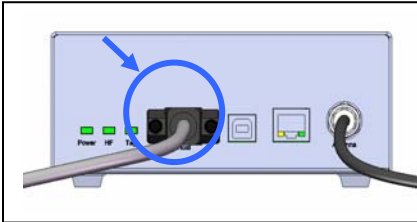
www.textile.datamars.com

1. CONNECTION

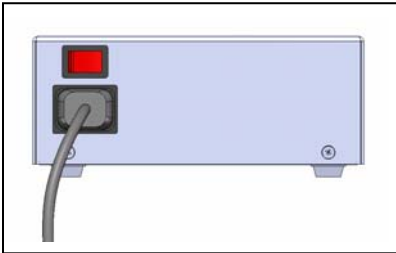
1. Connect the 3.5m black coaxial cable from the antenna to the connector marked as “Antenna”.



2. Connect the serial white cable from the connector marked “Host” to any serial port (COM) on your PC or the reader “R-IN 1300 MID” can be connected to the LAN just like a PC (Ethernet cable & RJ-45 connectors).



3. Connect the power cord to 110 – 240 V AC.



2. OPERATION

A. Terminal

1. For operation with terminal use any kind of terminal, e.g. Windows HyperTerminal with the following settings:

- Bits per second 115200
- Data bits 8
- Parity None
- Stop bits 1
- Flow control None

2. Commands

All commands must be followed by a carriage return (ENTER).

Main Command/settings Function

*d	Detect: returns the UID-list of all the HF transponders in the field
*i	Interrupts any continuous mode operation
*x	List of the commands and settings
*se	Settings: Displays the current settings
*rd	Restore default settings
*sa1	Standalone mode on
*lc2	Lock-code on

B. Ethernet

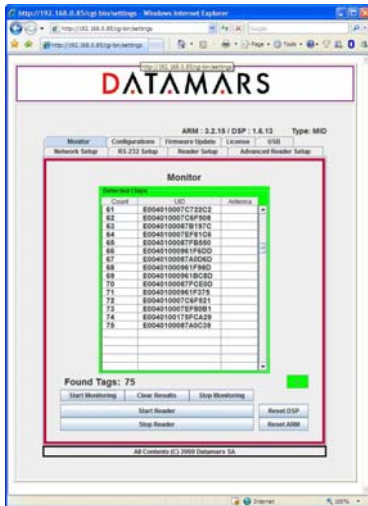
1. Configure your LAN Internet Protocol entering the following IP address (possibly in the Alternate Configuration): 192.168.0.1

2. Open a web browser (Internet Explorer, Firefox, etc.) and type http://192.168.0.85 (or the IP that you have configured) in the address bar. The login-page of the reader authorizes the access to the configuration-, monitoring- and administrator- tools.

The default accounts are defined as follows, passwords can be changed.

User: user1
Password: 1234

3. The monitor tab is used to verify whether the reader is activated or not.



The “Start Reader” button makes the reader start its inventory cycles.

The “Stop Reader” button makes the reader suspend its reading process.

The “Start Monitoring” button permits to display the UIDs of the chips found by the reader.

The “Clear Result” button clears the UIDs display.

The “Stop Monitoring” button stops the display.

The led “D” (detection) is green if the reader sends UIDs, red otherwise

3. WARNINGS

1. Do not place the antenna in proximity to metal surfaces to avoid de-tuning and install the equipment where regular ventilation is granted.
2. The reader may become hot After some time of operation.
3. If you install more than one R-IN1300 with antenna, be sure to set *mi1 (modulation index 20%).
4. Do not plug/unplug any connectors while the reader is turned ON.

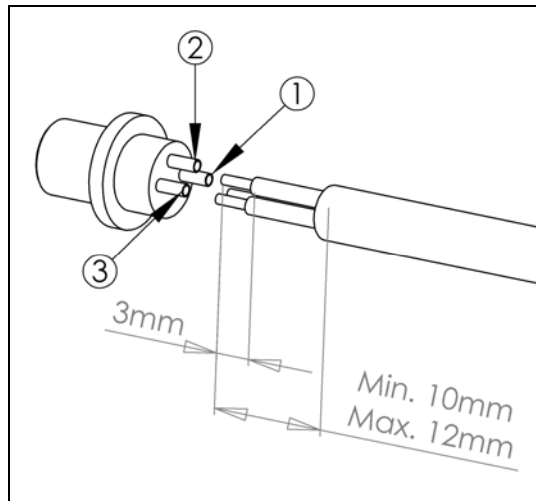
Need help?

For more product information refer to the user manual of the R-IN1300 MID on the CD-Rom.

ADDENDUM – 24V DC VERSION OF MID-RANGE READER

1. DC INPUT CONNECTOR

1.1. DC plug pinout and wire preparation

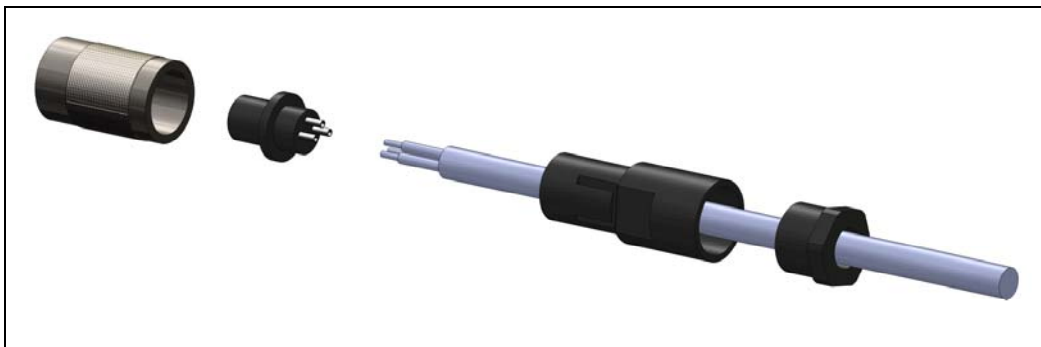


Pin number	Description
1	DC Positive terminal
2	Earth (must be connected)
3	DC Negative terminal (GND)

Wire section	Cable Outer diameter
0.25-0.34 mm ²	3.5-5 mm

1.2 DC plug to wire connection

The following picture shows how to assemble the connector on the 3 wire cable.

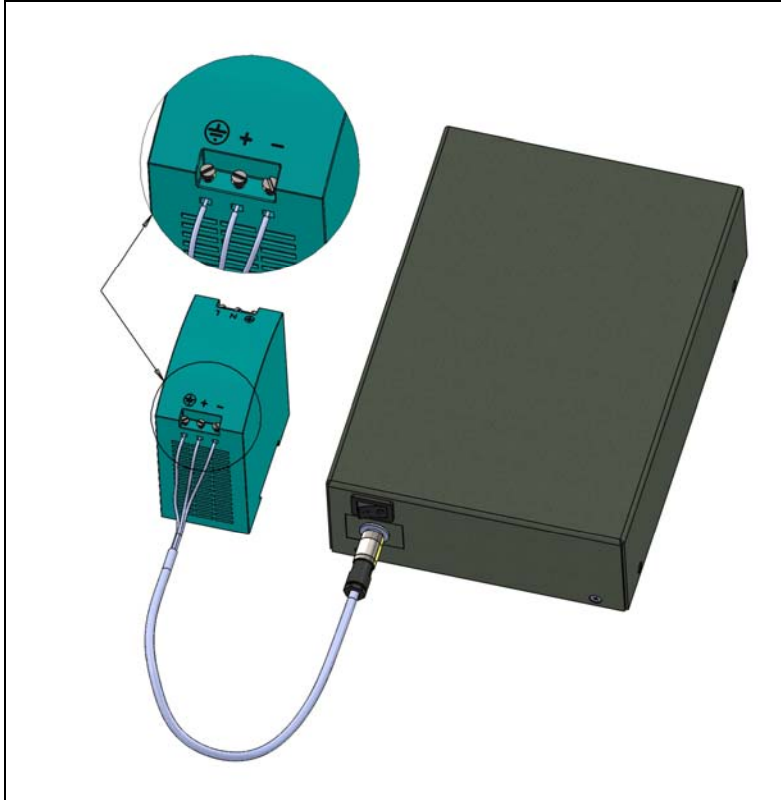


The 3 wire terminals must be soldered on the connector terminals as described in chapter 1.1.

2. INSTALLATION INSTRUCTION

The following figure shows how to connect the RIN1300MID to a 24VDC power supply.

Note: for optimum performance the earth must be connected.



DATAMARS

Corporate Headquarters - Textile ID business division:

Via Industria 16
6814 Lamone
Switzerland
Phone: +41 91 935 73 80
Fax: +41 91 945 03 30

textile-id@datamars.com
www.textile.datamars.com