

DATAMARS

TEXTILE ID

R-IN1300 MC

HF – multi read

USER MANUAL

Version 6.0



DATAMARS

Corporate Headquarters - Textile ID business division:

Via Industria 16
6814 Lamone
Switzerland
Phone: +41 91 935 73 80
Fax: +41 91 945 03 30

textile-id@datamars.com
www.textile.datamars.com

TABLE OF CONTENTS

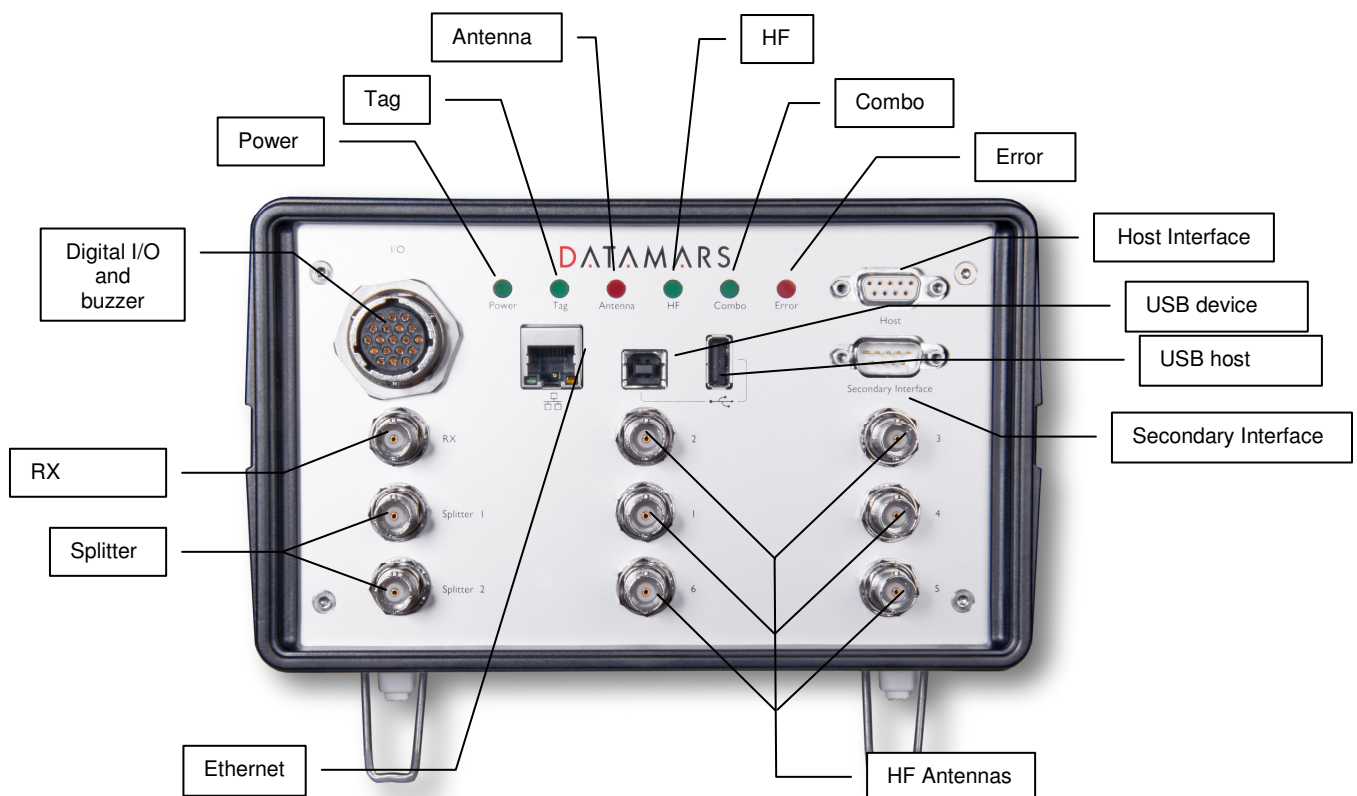
1	Introduction.....	2
2	Hardware connections	4
2.1	Mounting	5
3	'Single Channel Mode' Version.....	6
4	Operation with terminal	7
4.1	List of the commands of the reader	7
4.2	Generic Settings	7
4.3	ISO 15693 settings	12
4.4	I-Code I settings.....	13
4.5	Expert Antenna Setup.....	13
4.6	USB settings	15
4.7	Memory Pen Settings	15
5	Operation with Graphical User Interface (GUI).....	17
5.1	Connecting with the COM (RS-232)	17
5.2	Connecting with Ethernet (Recommended)	17
5.3	General Considerations	17
5.3.1	Third Party Interface.....	18
5.3.2	Human Interface	18
5.3.3	Login	19
5.4	Logout	20
5.5	Network Setup	21
5.6	RS 232 Setup.....	21
5.7	Reader Setup.....	22
5.8	Advanced Reader Setup.....	24
5.9	Antenna Selection.....	25
5.10	Combo Reader Setup – Advanced Combo Setup.....	27
5.11	Monitor.....	28
5.12	Configurations	29
5.13	Firmware Update.....	30
5.14	License	31
5.15	USB Setup.....	32
5.16	Tuning.....	32
5.17	System Requirements.....	33
6	USB-Device.....	34
6.1	USB Serial Emulation	34
6.1.1	First usage	34
6.1.2	Further usage	36
6.1.3	How to discover which COM-Port corresponds to the USB-Serial-Emulation.....	36
6.2	USB Mass Storage Emulation	38
7	Memory Pen	39
8	Tuning	41
9	Technical specifications for R-IN1300 MC.....	43
9.1	Operational characteristics	43
9.2	Electrical characteristics	43
9.3	Regulations	44
9.3.1	Equipment Modification	44
9.3.2	EN 300330-1/-2 (Europe)	44
9.3.3	FCC (USA).....	44
9.3.4	IC (Canada)	44
9.3.5	CE certification	45
9.3.6	Warranty	45
Appendix A - Connecting the R-IN1300 MC to a PC with a cross cable		46
Appendix B - Code length.....		48
Appendix C - I/O Pin Configuration.....		49
Appendix D - Troubleshooting		50

1 INTRODUCTION

The Datamars “R-IN1300 MC” High Frequency (HF) RFID-reader, designed to work in industrial environments, is resistant to vibrations, electromagnetic interference and able to detect the following transponder technologies:

- T-BT 1320, T-BT1315, T-BT1311 (ISO 15693), HF
- T-BT 7xxx series, LF (only with Datamars R-IN7500 reader connected externally)
- I-Code-1
- Other types of transponders could be read in “Combo” mode.

The reader is able to find simultaneously more than one High Frequency (HF - multi read) transponder¹ and one Low Frequency (LF – single read) chip at the same time if you have a R-IN7500 Low Frequency reader connected on the Secondary Interface.



LEDs

Power

Tag

Antenna

HF

Combo

Error

Light on when the reader is switched on

Light on when one or more transponder are detected

Light on when the antenna is not tuned or is near metallic objects or not connected

High Frequency reading is ON

The system is working in Combo mode (see chapter 2)


General Error

Antennas

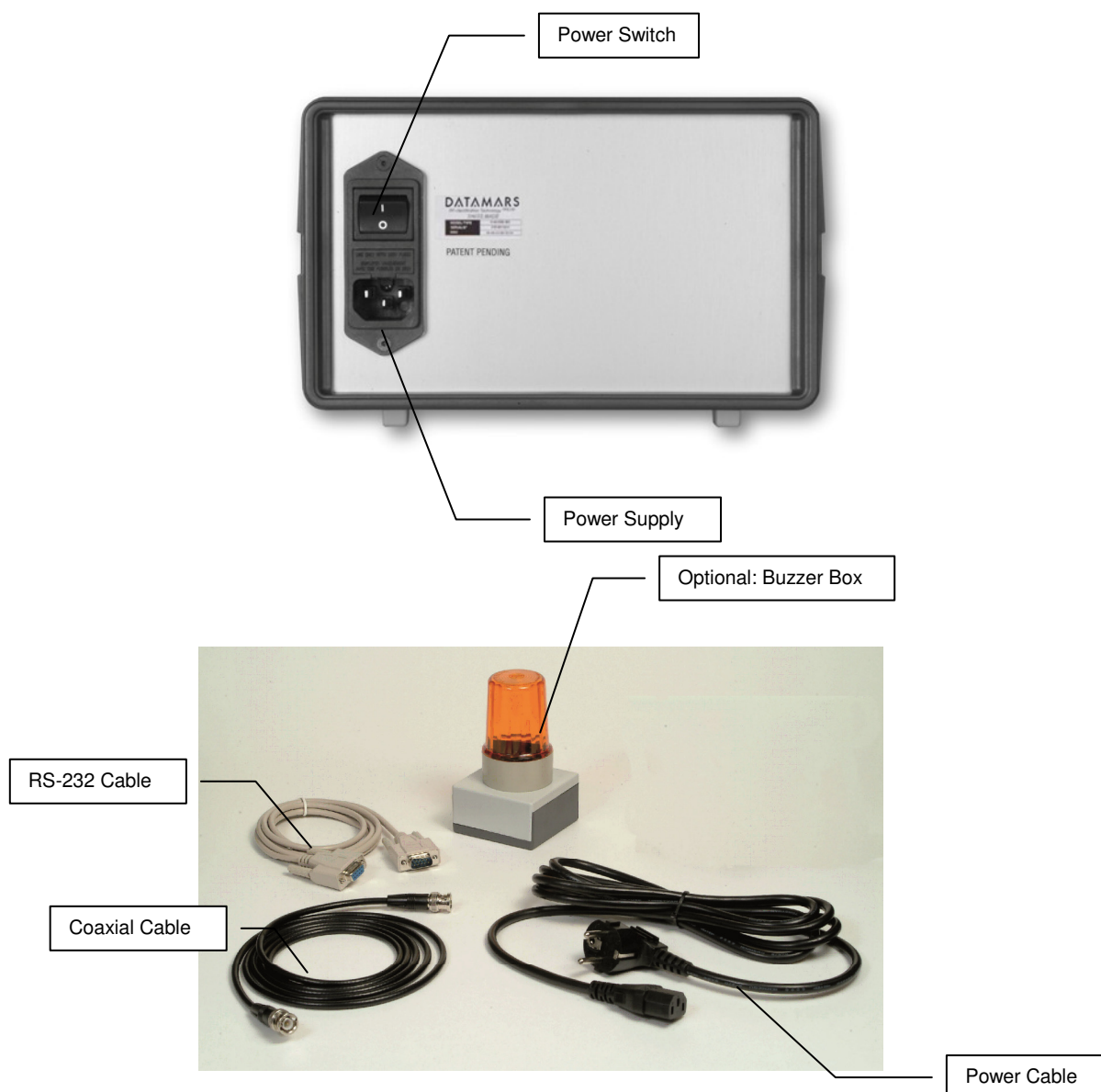
HF Antennas

TX/RX antenna channels from 1 to 6

¹ the quantity of transponders detected and the accuracy can change depending on the used transponder, the environment, the size of the antenna, etc.

Splitter	2 splitted channels (0° phase shift). Use 2.5m cable supplied by Datamars upon request.
RX Antenna	RX channel  very sensitive!
Interfaces	
Digital I/O	Digital Inputs and Outputs (see appendix C). Connect to any serial port (COM) on your PC with RS-232 cable or to any other RS232 Terminal.
Host	
Secondary Interface	Used in Combo mode (see chapter 2).
USB	Connect external USB-devices
Ethernet (Web Server)	Connect to LAN with a standard Ethernet cable. For more info in Ethernet communication please request the “R-IN1300 TCP/IP Dedicated Protocol” manual to support@datamars.com
Buzzer	Plug the buzzer into the Digital I/O connector
Power Switch	Turn ON and OFF the reader.
Power Supply	Connect the power supply cable (100-240VAC, 50-60 Hz).
Internal Battery	3V lithium battery CR1225FH

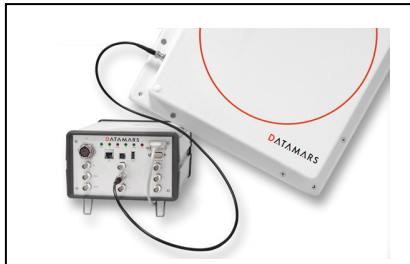
Caution: Risk of explosion if battery is replaced by an incorrect type. Dispose of used batteries according to instructions.



2 HARDWARE CONNECTIONS

1. **Antenna:**

Connect the black coaxial cable from the antenna to the connector marked as “1”.

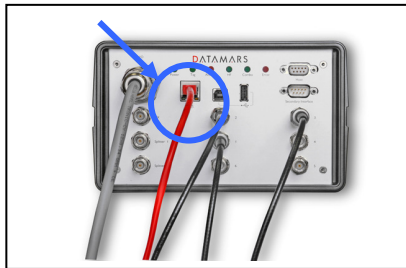
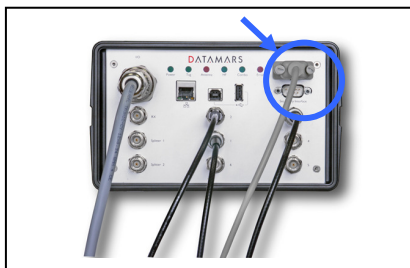


You can not use cable other than the 3.5m coaxial 50Ω cable supplied by Datamars SA. Additional extension cables at disposal.

2. **PC/Terminal or Ethernet**

It's possible to connect the reader in three possible ways:

- (1) Use the white serial white cable from the connector marked “Host” to any serial port (COM) on your PC.
- (2) Use the USB cable from the connector USB Device to any USB port on your PC(serial emulation).
- (3) Connect the reader to a LAN just like a PC (Ethernet cable & RJ-45 connectors)



A direct Ethernet connection between a PC and “R-IN1300 MC” reader is also possible, with an *Ethernet Cross Cable* (supplied together with the reader). Refer to Appendix A for more details on how to do this.

3. **Power**

Connect the power cable 100 – 240 V AC and be sure that it is well fixed.



4. Set the Power Switch to ON and check if the green LED (Power) is on.
5. Wait until lights “Tag” and “Antenna” stop flashing (~10 seconds).



Green light on

**IMPORTANT:**

- Please place the antenna as far as possible from metal surfaces to avoid possible reading interferences and avoid mounting it in places where regular ventilation is not granted.
- If the light “Antenna” turns on, the antenna might be too close to metal surfaces, not tuned or the coax cable may be damaged.
- After the reader is turned on for some time the temperature might increase.
- If you install more than one “R-IN1300 MC” with antenna, be sure to set *mi1 (modulation index 30%).



Do not plug/unplug any connectors while the reader is turned ON.

If you have a new R-IN7500 NMS:

1. Connect the Low Frequency (LF) Antenna to the connector marked “Ant.1” on the reader.
2. Connect a serial cable “RS-232” mentioned on the R-IN7500 to the connector “Secondary Interface” mentioned on the “R-IN1300 MC” reader.
3. Connect the power cable.
4. Turn the reader on.



Keep a distance between the LF and the HF antenna (min. 1m) in order not to influence the reading distance or use a combo antenna (A-ST1330 CBO) to read LF and HF transponders at the same time with the same antenna.



Although R-IN1300 MC is protected against ESD, to avoid reader malfunction make sure that no direct electrostatic discharge will happen into the reader case, antennas or even on metallic parts directly in contact with the reader enclosure or antennas structure. Typical case is ESD from metallic cart coming in contact with tunnel antenna metallic structure and shielding.

2.1 MOUNTING

The reader can be simply laid down on the table or be mounted on the wall or under a table using its appropriate wall mounting system.

3 'SINGLE CHANNEL MODE' VERSION

The functions of the reader are grouped into categories. Each category is dedicated to a specific task i.e. reading UIDs in different industrial environments, exchanging data with the reader via serial and Ethernet connections, monitoring the reader's activities and so on.

The most important categories of commands are made available per default by the reader which is thus able to perform tasks normally required in standard industrial environments. A special category of commands is used to enhance the capabilities of the reader for special purposes. This special category is not active per default: it must be activated typing the reader specific license-code.

The license-code can be requested by contacting Datamars and it is activated via terminal with command ***li** immediately followed by the code itself or via browser typing the license-code in the License-Tab.

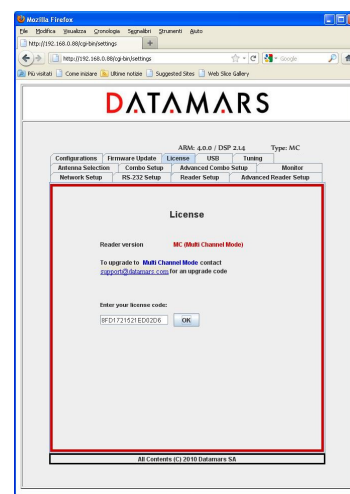
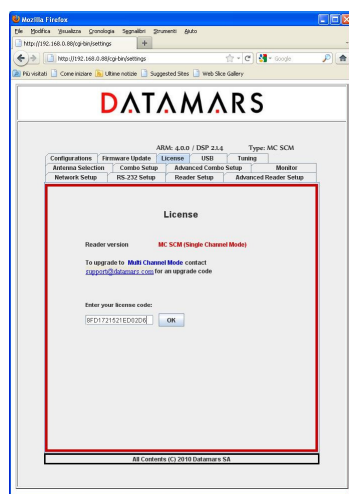
The basic version of the reader, the so-called **R-IN1300 MC SCM**, can thus be upgraded to the more powerful version, the so called **R-IN1300 MC**.

R-IN1300 MC SCM readers only use Antenna 1, Splitter and Rx and thus they can only be used in Single Channel Mode.

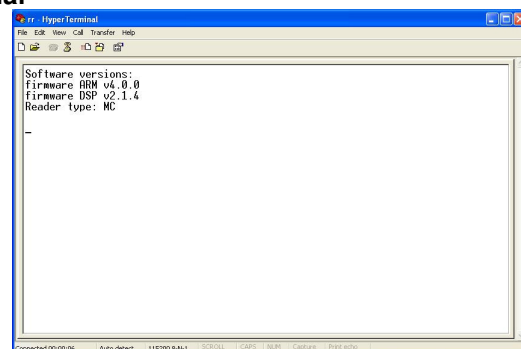
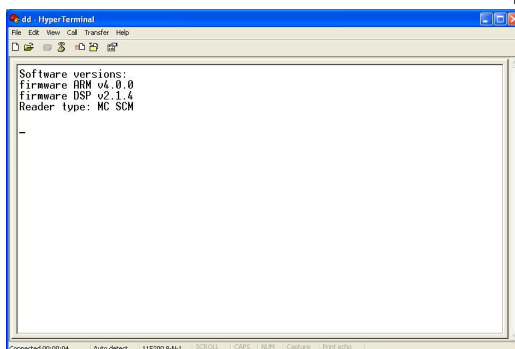
R-IN1300 MC readers can use Antenna 1, 2, 3, 4, 5, 6, Splitter and Rx.

Given a reader, it is possible to know whether it is a **MC SCM** or **MC** using the version-command (*v) given by terminal or opening a browser-connection to the reader (see next chapters)

Browser



Terminal



4 OPERATION WITH TERMINAL

For operation with terminal use any kind of terminal, e.g. *Windows HyperTerminal* with the following settings:


- Bits per second 115200
- Data bits 8
- Parity None
- Stop bits 1
- Flow control None

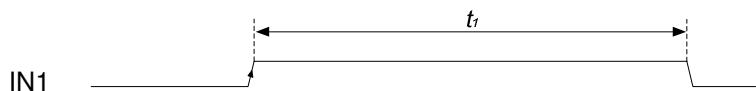
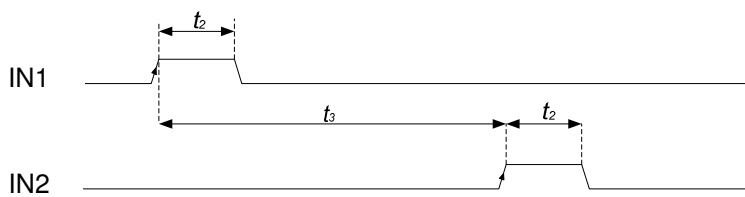
4.1 LIST OF THE COMMANDS OF THE READER



All commands must be followed by a carriage return (ENTER).

General Commands	Explanation
*d	Detect: returns the UID-list of all the HF transponders in the field
*i	Interrupts any continuous mode operation (does not disable the continuous mode)
*x	List of the commands and settings
*v	Version (ARM + DSP)
*se	Settings: Displays the current settings (Notice that the settings are maintained after power off)
*st	Store UIDs Usage: with the command “*st” switch from the state “Store UIDs off” to the state “Store UIDs on”. Then start reading with the command “*d”. The detected tags are not sent to the output devices but are cumulated internally. Using now the command “*dw” the reading process is stopped and the cumulated detected UIDs are sent to the output devices all at once.
*dw	Download UIDs (this command is coupled with *st – see above)
*li[]	Enter the reader-specific license code (upgrade). The license code is a 16-char long sequence (allowed chars 0,1,2...9, A,B,C...F (case insensitive)) Example: *liA03E45BC08C532BC


4.2 GENERIC SETTINGS

General settings	Explanation
*rd	Restore default settings  Any previously user defined settings will be deleted and replaced by factory defaults. Confirmation: “Default settings restored”

*co[]	Continuous mode: *co1 continuous mode on (default) *co0 continuous mode off
*in[]	Number of inventories (for non continuous mode only) *in[1..9] (default 1 [inventory], example *in5)
*id[]	Delay (ms) between two inventories (for non continuous mode only) *id[0..1000] (default 0ms, example *id530)
*rh[]	Remove headers: *rh0 does not remove the headers *rh1 removes the headers (default)
*ec[]	Echo: *ec0 echo disabled (default) *ec1 echo enabled “echo” makes it possible to view the characters sent to the reader.
*sa[]	Stand alone mode: *sa0 stand alone mode disabled (default) *sa1 stand alone mode enabled (detect) When stand alone mode is enabled, the device will start reading as soon as it is turned on.
*bu[]	Buzzer Box (beeper). *bu0: buzzer disabled *bu1: buzzer activated on tags-detection *bu2: buzzer activated on antenna-transmission
*it[]	Input trigger: The reader will start working only when the external inputs will allow it, as shown in the following details. Recommended for single-read operational mode. *it0 input trigger disabled (default) *it1 input trigger 1 enabled *it2 input trigger 2 enabled *it3 input trigger 1 enabled (reversed edge-logic) *it4 input trigger 2 enabled (reversed edge-logic)
<p>Details for *it1:</p>  <p>IN1</p> <p>Use:</p> <ul style="list-style-type: none"> • When IN1 is high level, it's possible to read the transponder. • t_1 min 50 ms. • See Appendix C to know where IN±1 pins are located in the I/O connector. • See Appendix B for electrical characteristics of the input. 	
<p>Details for *it2:</p>  <p>IN1</p> <p>IN2</p> <p>Use:</p> <ul style="list-style-type: none"> • The rising edge of IN1 starts reading. • The rising edge of IN2 stops reading. 	

<ul style="list-style-type: none"> • t_2 min 5 ms • t_3 min 100 ms • See Appendix B to know where IN1 or IN2 pins are. • See Appendix B for electric characteristics of the input. 	
*nl[]	New Line character(s) selection: *nl0 line feed and carriage return (0x0D 0x0A) (default) *nl1 line feed (0x0A) *nl2 carriage return (0x0D) *nl3 carriage return and line feed(0x0A 0x0D)
*pw[]	Output power: *pw[0..12000] range of power from 0 to 12000 mW (default 4000 mW) - Example *pw4000  The selected output power is an approximate value.  Check the maximum power supported by your antenna before raising the power of the reader higher than 4000 mW.
*dt[]	Time between UIDs: This parameter inserts a time delay between the transmissions of codes. *dt[0..200] range of time between UIDs from 0 to 200 units (default 0), 1 unit = 10ms (example: *dt10 >> 100ms)
*lc[]	Lock code: *lc0 lock code disabled (default) *lc1 lock code 1 enabled *lc2 lock code 2 enabled *lc3 lock code 3 enabled
Details for *lc1: Any transponder is read just once. To read a transponder again, another one must be read first. The transponder is first detected only once without regard to the time spent in the field. Details for *lc2: A chip can be read again only if it has been outside the reading area for more than *ti[] seconds. Details for *lc3: A transponder can be read again only if it has been outside the reading area meanwhile at least *cn[] different transponders have been read.	
*ti[]	Time out: *ti[0..180] time parameter for lock code 2 from 2 [s] to 180 [s] (default 10 [s], example *ti10)
*cn[]	Number of transponders to be read before releasing a lock on tag previously read: *cn[1..9] counter parameter for lock code 3 from 1 to 9 [tags] (default 2 tags, example *cn7)
*sk[]	Skip time slot on no response: *sk0 skip on no response off *sk1 skip on no response on (default)
*ct[]	Collision threshold parameter: *ct[0 .. 100] parameter from 0 to 100 (default 33, example *ct33)
*cs[]	Channel Selection: *cs0 channel I (default). Cable length must be 3,5m (ev. + 7,2m)

	<p>extensions).</p> <p>*cs1 channel I and Q. There are no limitations on the cable length.</p> <p>Note: In order to safety switch channel, the reader is automatically stopped before executing this command.</p>
*et []	<p>Communication selection :</p> <p>*et0 Ethernet</p> <p>*et1 RS232</p> <p>*et2 RS232 and Ethernet (default)</p>
*br[]	<p>baud rate:</p> <p>*br0 baud rate 9600</p> <p>*br1 baud rate 19200</p> <p>*br2 baud rate 38400</p> <p>*br3 baud rate 57600</p> <p>*br4 baud rate 115200 (default)</p>
*cl[]	<p>Code length:</p> <p>See Appendix A for more details.</p> <p>*cl0 16 characters UIDs (standard, default)</p> <p>*cl1 15 characters UIDs (Partial code)</p> <p>*cl2 14 characters UIDs (Partial code)</p> <p>*cl3 13 characters UIDs (Partial code)</p> <p>*cl4 12 characters UIDs (Partial code)</p> <p>*cl5 12 characters UIDs (First character special)</p> <p>*cl6 11 characters UIDs (Partial code)</p> <p>*cl7 10 characters UIDs (Partial code)</p> <p>*cl8 9 characters UIDs (Partial code)</p> <p>*cl9 8 characters UIDs (Partial code)</p> <p>Attention: code maybe not unique with the selected code length</p>
*tt[]	<p>Tag technology:</p> <p>*tt1 tag technology ISO 15693(T-BT1320 T-BT1315) (default)</p> <p>*tt2 tag technology NXP I-Code I</p> <p>Example:</p> <p>*tt1: only ISO</p> <p>*tt2: only I-Code I</p> <p>*tt12: both ISO and I-Code I</p>
*if	<p>Plots the current (TCP/IP) network configuration of the reader including submask and default gateway</p>
*ip[_-_-_-]	<p>Configure the IP (Internet Protocol) number of the reader.</p> <p>Example:</p> <p>*ip192-168-0-1</p> <p>Sets the IP number 192.168.0.1</p> <p>The default IP number of any new reader is 192.168.0.85</p>
*ipsb[_-_-_-]	<p>Set the IP sub-mask associated to the local IP address:</p> <p>Example:</p> <p>*ipsb255-255-254-0 set the new sub mask for the eth0 IP interface</p>
*ipgw[_-_-_-]	<p>Set the IP address of the local gateway:</p> <p>Example</p> <p>*ipgw192-168-0-201 set the gateway address to 192.168.0.201</p> <p>To remove the default gateway: *ipgw0-0-0-0</p>
*at[]	<p>Selects the type of antenna connected to the reader.</p> <p>*at0 Generic 3D antenna</p> <p>*at1 Table-Top Antenna (default)</p>

	<p>*at2 Tunnel Antenna (Cyclic switching scheme) *at3 Tunnel Antenna (Progressive switching scheme) *at4 Tunnel Antenna (Cyclic/Progressive switching scheme) *at5 Bin Antenna (5W Power and quite mode set as default)</p> <p>Quiet mode set as default for Tunnel Antenna See the user manual of the specific antenna for further details.</p>
*ha[]	<p>Antenna Enumeration: When enabled, each UID will include a number indicating which channel (antenna) read it.</p> <p>Example:</p> <p>3 E00123456789ABCD Antenna 3 has read the UID E00123456789ABCD</p> <p>*ha0: disable antenna enumeration (default) *ha1: enable antenna enumeration</p>
*an[]	<p>HF antenna select: Selects the channel to which the antenna is connected (if the reader is Multi-channel).</p> <p>*an1: select HF antenna 1 (default) *an2: select HF antenna 2 *an3: select HF antenna 3 *an4: select HF antenna 4 *an5: select HF antenna 5 *an6: select HF antenna 6 *an7: select Splitter antenna 7: corresponds to the splitter: the two channels marked with “Splitter 1” an “Splitter2” (on the front-panel of the reader) are activated at the same time each one using the half of the power</p> <p> This command is valid only with antenna types 0 and 1 (*at0 and *at1)</p>
*cb[]	<p>Combo Mode: This mode allows connecting a secondary reader to the “R-IN1300 MC”.</p> <p>*cb0: Combo mode disabled (default) *cb1: Multiplexed output enabled Combo mode (Digital Output A1) *cb2: Multiplexed RS-232 enabled Combo Mode (R-IN7500) *cb3: Continuous Combo Mode *cb4: the same as *cb1 but for generic readers *cb5: the same as *cb3 but for generic readers *cb6: the same as *cb3 but for R-IN9000 readers</p> <p>When any combo mode is enabled, an R-IN7500 reader can be configured by sending commands to the “R-IN1300 MC”, with the standard R-IN7500 syntax.</p>
*tc[]	<p>Secondary reader multiplexed reading time * 20ms: Example:</p> <p>*tc[120]: 120 * 20 ms = 2400 ms = 2.4 s</p> <p>Maximum allowed parameter: 200 (4s)</p>
*os[]	<p>Indicates which I/O channel is to be used to drive the LF-Reader if combo-mode is set.</p> <p>Output line for combo mode.</p>

	<p>Select the I/O connector output from 1 to 8.</p> <table border="1"> <tr><td>1</td><td>Internal relay selected</td></tr> <tr><td>2</td><td>Digital output A1</td></tr> <tr><td>3</td><td>Digital output A2</td></tr> <tr><td>4</td><td>Digital output A3</td></tr> <tr><td>5</td><td>Digital output A4</td></tr> <tr><td>6</td><td>Digital output B1</td></tr> <tr><td>7</td><td>Digital output B2</td></tr> <tr><td>8</td><td>Digital output B3</td></tr> </table>	1	Internal relay selected	2	Digital output A1	3	Digital output A2	4	Digital output A3	5	Digital output A4	6	Digital output B1	7	Digital output B2	8	Digital output B3
1	Internal relay selected																
2	Digital output A1																
3	Digital output A2																
4	Digital output A3																
5	Digital output A4																
6	Digital output B1																
7	Digital output B2																
8	Digital output B3																
*nh[]	Number of reading cycles on HF-Antenna if combo-mode is set. Values from 1..9																
*rg[]	Receiver gain (in case of doubt, do not modify): Amplification of the received signal. *rg0, *rg1, *rg2, *rg3 (default): allowed amplification steps																
*re[]	Reverse order *re0 UID not reversed (default) *re1 UID reversed																
*lo[]	Location: The place where the reader has been put. Valid values: sequences of characters (max. length = 40)																
*sy[]	Synchronized reading *sy0 reading not synchronized (default) *sy1 reading synchronized NB: Customers are not allowed to modify the value of this setting (DM-Customer-Support only)																

4.3 ISO 15693 SETTINGS


ISO 15693 settings	Explanation
*rm[]	Reader request rate: *rm0 Reader Request Rate: SLOW (1 out of 256) *rm1 Reader Request Rate: FAST (default) (1 out of 4)
*mt[]	Modulation type: *mt0 modulation type ASK *mt1 modulation type FSK (default)
*tm[]	Tag response rate: *tm0 Tag Response Rate: SLOW *tm1 Tag Response Rate: FAST (default)
*mi[]	Modulation index: *mi0 modulation index 10% *mi1 modulation index 30% (default) *mi2 modulation index 100%
*ts[]	Time slots ISO-15693: *ts0 single time slot (default) *ts1 16 times slots
*qm[]	Quiet mode: When this mode is enabled the transponder will answer just once while in the antenna field. *qm0 quiet mode off (default) *qm1 quiet mode on
*aw[]	Anti-collision window correction: Range: *aw[0..32] (default: 0) - Example *aw14







	NB: Customers are not allowed to modify the value of this setting (DM-Customer-Support only)
*rw[]	Response window correction: Range: *rw[-64..64] (default: 0) - Examples: *rw-14 (for negative values use '-') *rw14 (for positive values do not use '+') NB: Customers are not allowed to modify the value of this setting (DM-Customer-Support only)
*pp[]	Positive pulse width correction: Range: *pp[-30..30] (default: 0) - Examples: *pp-25 (for negative values use '-') *pp25 (for positive values do not use '+') NB: Customers are not allowed to modify the value of this setting (DM-Customer-Support only)
*pn[]	Negative pulse width correction: Range: *pn[-30..30] (default: 0) - Examples: *pn-25 (for negative values: use '-') *pn25 (for positive values do not use '+') NB: Customers are not allowed to modify the value of this setting (DM-Customer-Support only)

4.4 I-CODE I SETTINGS

*nt[]	Time slots I-Code I: 0 single time slot 1 4 time slots 2 8 time slots 3 16 time slots (default) 4 32 time slots 5 64 time slots 6 128 time slots 7 256 time slots
--------	---

4.5 EXPERT ANTENNA SETUP

Expert Antenna Setup	Explanation
*xm[]	Receiver Channel: *xm0: Rx/Tx mode (one antenna connected to channels 1 to 6) (default) *xm1: Rx and Tx separate (two antennas : one connected to channels 1 to 6 and the other connected to RX channel).  RX channel is very sensitive!
*sm[]	Single or multiple antenna selection: *sm0: Single antenna (use *an[] command to select antenna) (default) *sm1: Multiple antenna (use *am[] command to select antenna sequence)
*am[]	Selection of a sequence of multiple antennas. This command is valid only when parameters *at0 and *sm1 have been entered.

	<p>This command accepts a minimum of 2 and a maximum of 20 parameters, between 1 and 7 each.</p> <p>Example: *am321356 antennas 3, 2,1,3,5 and 6 in the given sequence.</p> <p> Always enter command *sm1 after issuing an *am command</p>																		
*ta[]	<p>Number of reading cycles per selected antenna. This command accepts a minimum of 2 and a maximum of 20 parameters, between 1 and 9 each.</p> <p>Example: if antennas 1, 2 and 3 have been selected with *am123 and *ta468</p> <p>The reader will read four times on antenna 1, six times on antenna 3 and eight times on antenna 3.</p> <p> The number of parameters of *ta has to be always the same as the number of parameters of *am</p> <p> Always enter command *sm1 after issuing an *ta command</p>																		
*oa[]	<p>Digital output per selected antenna. This command accepts a minimum of 2 and a maximum of 20 parameters, between 0 and 8 each.</p> <p>Example: if antennas 1, 2 and 3 have been selected with *am123 and *oa678</p> <p>The reader will activate output 6 when antenna 1 is selected, output 7 when antenna 2 is selected and output 8 when antenna 3 is selected.</p> <p>Output channels 0 to 8 correspond to the following open collector outputs on the I/O connector:</p> <table border="1"> <tr><td>0</td><td>No output selected</td></tr> <tr><td>1</td><td>Internal relays selected</td></tr> <tr><td>2</td><td>Digital output A1</td></tr> <tr><td>3</td><td>Digital output A2</td></tr> <tr><td>4</td><td>Digital output A3</td></tr> <tr><td>5</td><td>Digital output A4</td></tr> <tr><td>6</td><td>Digital output B1</td></tr> <tr><td>7</td><td>Digital output B2</td></tr> <tr><td>8</td><td>Digital output B3</td></tr> </table> <p> The number of parameters of *oa has to be always the same as the number of parameters of *am</p> <p> Always enter command *sm1 after issuing an *oa command</p>	0	No output selected	1	Internal relays selected	2	Digital output A1	3	Digital output A2	4	Digital output A3	5	Digital output A4	6	Digital output B1	7	Digital output B2	8	Digital output B3
0	No output selected																		
1	Internal relays selected																		
2	Digital output A1																		
3	Digital output A2																		
4	Digital output A3																		
5	Digital output A4																		
6	Digital output B1																		
7	Digital output B2																		
8	Digital output B3																		
*pg[]	<p>This command applies specific tunnel antenna switching algorithms.</p> <p>*pg0: Cyclic *pg1: Progressive *pg2: Cyclic/Progressive</p> <p> If you are not using a tunnel antenna, use parameter *pg0</p>																		

*o[][]	Activate/deactivate single digital outputs.
*o0	Deactivate all outputs
*o10	Deactivate relais
*o11	Activate relais
*o20	Deactivate Digital output A1
*o21	Activate Digital output A1
*o30	Deactivate Digital output A2
*o31	Activate Digital output A2
*o40	Deactivate Digital output A3
*o41	Activate Digital output A3
*o50	Deactivate Digital output A4
*o51	Activate Digital output A4
*o60	Deactivate Digital output B1
*o61	Activate Digital output B1
*o70	Deactivate Digital output B2
*o71	Activate Digital output B2
*o80	Deactivate Digital output B3
*o81	Activate Digital output B3

4.6 USB SETTINGS

The USB-device can be used to emulate a serial-connection or a mass storage. Using the USB-device like a “mass storage emulator”, it is possible to write the detected UIDs into a formatted file (journal-file). The file format per default is CSV so that the journal-file can be opened with “Microsoft Excel”.

The generic format of journal-file looks like this:

If antenna-index is not known	If antenna-index is known
UID0 <line-separator>	UID0 <field-separator> Antenna Index <line-separator>
UID1 <line-separator>	UID0 <field-separator> Antenna Index <line-separator>
UID2 <line-separator>	UID0 <field-separator> Antenna Index <line-separator>
UID3 <line-separator>	UID0 <field-separator> Antenna Index <line-separator>
...	...

The customer can configure the “field-separator”, the “line-separator” and the extension of the journal-file.

Note: Refer to chapter 6.2 to get information on how to retrieve and handle the journal-file

*us[]	USB usage: *us0 USB disabled *us1 USB serial emulation *us2 USB mass storage emulation
*jf[]	Journal-file format: *jf0 csv-format (default) *jf1 customized format
*fs[]	Field-separator: Valid values: sequences of characters (max. length = 10) To specify “Carriage-Return”, type “\r” To specify “New-Line”, type “\n”

	To specify "Horizontal-Tab", type "\t"
*ls[]	Line-separator: Valid values: sequences of characters (max. length = 10) To specify "Carriage-Return", type "\r" To specify "New-Line", type "\n" To specify "Horizontal-Tab", type "\t"
*fe[]	Journal-file extension: Valid values: sequences of characters (max. length = 5)

4.7 MEMORY PEN SETTINGS

*mp[]	Memory-pen mode: *mp0 Memory-pen mode off *mp1 Memory-pen mode on When memory-pen mode is on, read UIDs are written in the memory-pen into a file named "inventory.txt (more details in chapter 7)
*td	Show current time and date (more details in chapter 7)
*td[___...___]	Set current time and date Format: *td-DD-MM-YYYY-hh-mm-ss Ex: *td-03-09-2010-15-05-30 (3 rd September 2010 15:05:30)

5 OPERATION WITH GRAPHICAL USER INTERFACE (GUI)

The R-IN1300 MID can be operated through 2 kinds of GUIs:

- The http GUI (Java applet) via the Ethernet port which can be used through a standard browser like MS Internet Explorer or Firefox.
- The Datamars Reader Configurator, a Java application which communicate to the reader though the RS-232 serial port based on the terminal interface protocol (see sections 4)

5.1 CONNECTING WITH ETHERNET (RECOMMENDED)

The reader “R-IN1300 MC” can be connected to the LAN just like a PC (Ethernet cable & RJ-45 connectors).



A direct Ethernet connection between a PC and “R-IN1300 MC” reader is also possible, with an *Ethernet Cross Cable* (supplied together with the reader). Refer to Appendix A for more details on how to do this.

In both cases the reader “R-IN1300 MC” must be provided with a correct IP-Address (**DHCP is not yet available. Thus the reader is not yet able to get its IP-address automatically**).

To provide the “R-IN1300 MC” reader with an IP-address, it is recommended to configure it with the supplied cross cable (or RS-232 interface), at least for the first time, in order to avoid IP conflicts in your network. See appendix A for more details on how to connect your reader with a cross cable.

When the reader has its own IP-Address on the LAN (or with cross cable), you can go to login-page of the reader and have access to the configuration-, monitoring- and administrator- tools. To access the login-page, open a web browser (Internet Explorer, Firefox, etc.) and type <http://192.168.0.85> (or the IP that you have configured) in the address bar.

5.2 CONNECTING WITH THE COM (RS-232)

The reader “R-IN 1300 MID” can be connected to a PC with a serial connection and operated through the Datamars Reader Configuration



The Datamars Reader Configuration is a Java application which makes use of the command line interface through the RS-232 interface. The application need to be installed on the PC from the the CD-ROM supplied with the reader. The installation will start automatically when the disk is inserted in the PC, just follow the on screen instructions.

In case the installation does not start, open the CD and double click on “install”.

At the end of the installation procedure the necessary software will be found in the Start menu.

5.3 GENERAL CONSIDERATIONS

5.3.1 THIRD PARTY INTERFACE

The “R-IN1300 MC” Reader always listens to incoming TCP/IP connections on port 1026 (TCP/IP socket).

Using this dedicated TCP/IP socket, third party applications can connect to, exchange data with, configure and monitor the “R-IN1300 MC” reader.

Refer to the “R-IN 1300 TCP/IP Dedicated Protocol” (UM001031) for a detailed description of the whole communication protocol and syntax.

5.3.2 HUMAN INTERFACE

The interface (graphical program running on the browser) shows the configuration of the reader “R-IN1300 MC” as a tabbed panel. Each panel groups logically tied parameters.

The SAVE, DEFAULT and CANCEL buttons act locally on the parameters of the current active tab. The REFRESH button acts on the whole configuration (on all tabs).

To save the configured settings shown in the tab, press the SAVE button.

To restore the factory default settings of the current tab, press the DEFAULT button.

To undo changes done on the current tab, press the CANCEL button.

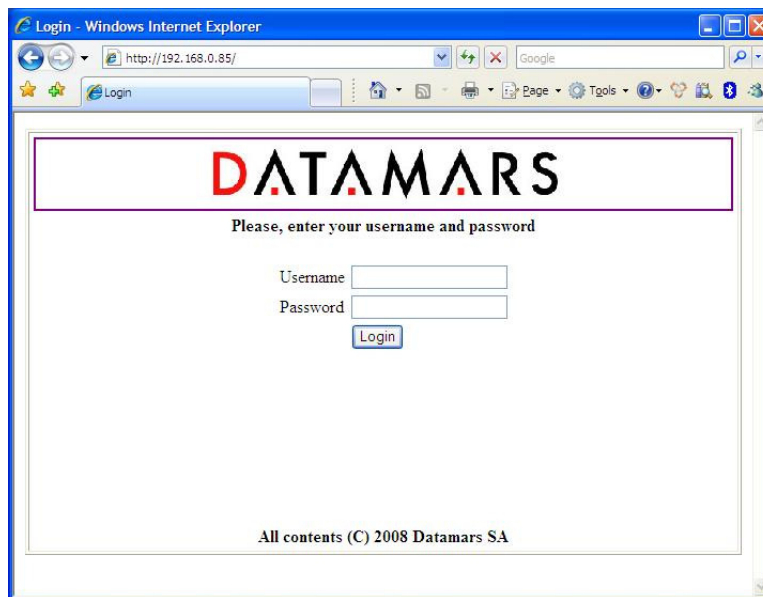
To view the actual parameters of the reader on all tabs, press the REFRESH button.

The parameters shown in the tabs may depend on each other. The selection of some options could make some parameters “meaningless” in this context. In such cases relevant parameters are shown normally while “meaningless” parameters are masked/disabled.

All parameters described in this manual refer to the High Frequency “R-IN1300 MC” with exception of the parameters contained in the “Combo Setup Panel” and “Advanced Setup Panel” which refer to the “Low Frequency Reader R-IN 7500”.

The graphical application requires a Java2 or Java5 plug-in. If the requested plug-in is already installed on your PC, you are immediately able to run the application. Otherwise the system will try to connect to the WWW to download the plug-in. In this case, follow every installation step always accepting the defaults suggested by the system.

5.3.3 LOGIN



The interface running on the browser permits access to users only via login (user name & password): attempts to join the configuration- and monitoring tools directly via bookmarks are prevented from the system.

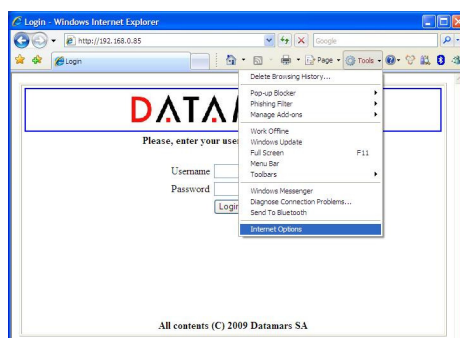
A user trying to connect while the system is already occupied (i.e. by another user having logged in before) gets access in read-only mode thus preventing the configuration from being modified at the same time by more users.

When the user closes the browser, the system becomes free, allowing other users to login and get read-write mode. The administrator (only she/he) can force the system to disconnect users when the system is kept busy too long. The default accounts are defined as follows, passwords can be changed.

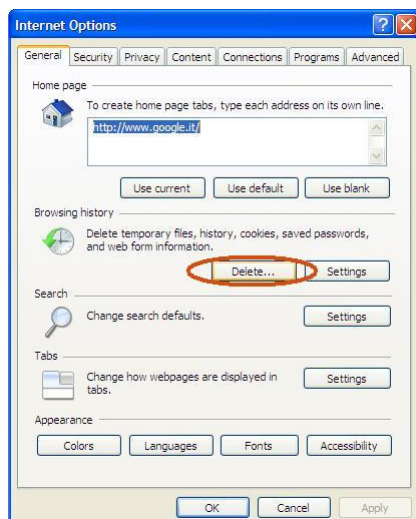
User Names	Default Passwords
admin	Admin (read, modify and administrative rights)
user1	1234 (read and modify rights)
user2	1234 (read-only rights)

Please note: in case of problems while connecting to the reader via browser, try to clear the cache of the browser.

1) First step: select “Tools” and then “Internet Options”



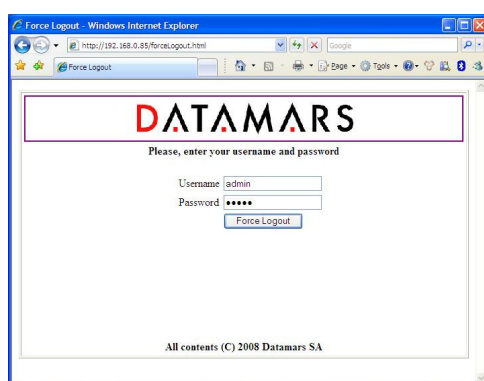
2) Second step: Press the button *Delete...”



3) Third step: press the button “Delete”



5.4 LOGOUT



The “administrator” can disconnect every session to the reader in case of suspect use of the GUI (i.e. a user is logged in for too much time monopolizing the system).
The “administrator” must go to the URL: <http://ip-address-of-the-reader/forceLogout.html> and give her/his user password.

5.5 NETWORK SETUP

The screenshot shows the DATAMARS web interface with the 'Network Setup' tab selected. The window title is 'DATAMARS'. At the top, it displays 'ARM: 4.0.0 / DSP 2.1.4' and 'Type: MC'. The navigation bar includes tabs for 'Configurations', 'Firmware Update', 'License', 'USB', 'Tuning', 'Antenna Selection', 'Combo Setup', 'Advanced Combo Setup', 'Monitor', 'Network Setup', 'RS-232 Setup', 'Reader Setup', and 'Advanced Reader Setup'. The 'Network Setup' tab is active, showing a 'Network Setup' dialog box. Inside this dialog, there are two radio buttons: 'DHCP (automatic IP) Location' and 'Static IP'. The 'Static IP' option is selected. Below it, there are input fields for 'Static IP' (192.168.0.88), 'Port' (80), 'Subnet mask' (255.255.255.0), and 'Gateway' (0.0.0.0). There is also a 'Location' text field. At the bottom of the dialog, there are buttons for 'Save', 'Default', 'Cancel', and 'Refresh'. Below the dialog, there is a 'Change Password' section with fields for 'Old Password:', 'New Password:', and 'Confirm:', followed by a 'Change Password' button. At the very bottom of the window, it says 'All Contents (C) 2010 Datamars SA'.

The “Network Setup” tab allows users to specify network parameters: IP address, sub-mask and default gateway. The IP address can be a fixed IP-Address (in this case the ip-address and port must be specified) or a dynamic one (DHCP) *not available yet*. After having changed any network parameters, the browser must be closed and a new login must be done using the new network setup of the reader.

The “Location” field specifies the place where the reader has been put. From this tab it is also possible to change the password of the current user. The current password must be specified, the new password must be confirmed (specified twice). Pressing the CHANGE PASSWORD button, the request is submitted to the reader and the user is told about the success/failure of the sent command.

5.6 RS 232 SETUP

The screenshot shows the DATAMARS web interface with the 'RS-232 Setup' tab selected. The window title is 'DATAMARS'. At the top, it displays 'ARM: 4.0.0 / DSP 2.1.4' and 'Type: MC'. The navigation bar is the same as in the previous screenshot. The 'RS-232 Setup' tab is active, showing an 'RS-232 Setup' dialog box. Inside this dialog, there are several configuration options: 'Baud Rate' (115200), 'Number of Bits' (8 bits), 'Stop Bits' (1 stop bit), 'Parity' (no parity bit), 'Handshake' (None), 'Remove Headers' (On), 'Continuous' (On), 'New Line' (Return + Line Feed), 'Stand Alone' (Stand Alone Mode Disabled), 'Inter Code Delay (ms)' (0), and 'Code Length' (16 Chars UID (Standard)). At the bottom of the dialog, there are buttons for 'Save', 'Default', 'Cancel', and 'Refresh'. At the very bottom of the window, it says 'All Contents (C) 2010 Datamars SA'.

The “RS-232 Setup” allows users to specify the properties of the serial connection.

The “Baud Rate” and “New Line” fields are implemented on the interface (PC or browser) as well as on the reader.

The fields “Number of bits”, “Stop bits”, “Parity”, “Handshake” are implemented on the interface but not yet on the reader. Changes done on these fields do not yet affect the system behaviour.

The “Remove Header” field informs the reader that expected responses must contain only essential information (explanations, warnings and miscellaneous information must be cut off).

The “Continuous” field enables/disables the continuous-reading mode. If this property is enabled, inventory-cycles are automatically repeated otherwise only one cycle is done.

The “Stand Alone” field has following meanings:

Stand Alone Mode Disabled: after the reader has been turned on, it waits for the start-reading command to come. Until this moment, it remains in a not-reading state.

Stand Alone Mode Enabled (Detect): at power on the reader starts reading automatically and sends the found UIDs after each inventory cycle.

The “Inter Code Delay” field specifies how much time (in sec/100) must be awaited between the sending of two subsequent UIDs.

The “Code Length” field specifies the length and format of the sent UIDs.

5.7 READER SETUP

The “ReaderSetup” tab allows users to specify overall properties of the reader.

It is possible to specify:

the antenna power:

- 0 mW – 12 000 mW (1000 mW = 1 W; 2000 mW = 2 W; etc.)

the technologies of the transponders being used:

- ISO-15693
- I-Code I

the ISO-15693 properties (see corresponding ISO-specification):

- Request/Response Data Rate
- Modulation Type/ Modulation Index
- Quiet Mode /Quiet Storage
- Time Slots ISO/I-Code-1

The “Channel Selection” field specifies which channel is selected between I-Channel and I/Q-Channel. Choose I-Channel with 3.5 m cables for best performance.

The “Receiver Mode” field allows selecting “Rx/Tx” or “Rx Only”. Select “Rx/Tx” if you have a single antenna or “Rx Only” if you want to use a separate antenna connected to the Rx connector.

Caution: the Rx Channel is very sensitive.

The “Lock Code” field specifies a particular behaviour of the reader:

Details for **LockCode 0:** Disabled.

Details for **LockCode 1 (on detection):** Any transponder is read just once. To read a transponder again, another one must be read first.

Details for **LockCode 2 (on timeout):** The transponder is first visible when entering the magnetic field the first time and it is detected only once without regard to the time spent in the field. A chip having left the magnetic field can be read again only having spent an amount of time T outside of it. If the time spent outside the magnetic field is less than T, the chip cannot be detected.

Details for **LockCode 3 (on counter):** The transponder is visible only once when entering the magnetic field for the first time. Afterward, to be visible again, it must leave the magnetic field area and wait outside until at least N different transponders have been read (N is the number specified by the field “**Lock Code Count**”).

Note: **LockCode 1** (on detection) is the same as **LockCode 3 (on counter)** with **N = 1**.

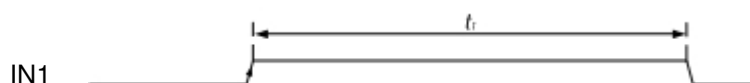
The “Communication” field specifies on which output channels the reader must write the found UIDs.

The “Echo” field specifies whether the **user-input** written onto the terminal (RS-232) must be shown on the screen or not.

The “Input Trigger” field specifies a particular behaviour of the reader:

Input-Trigger 0: Disabled

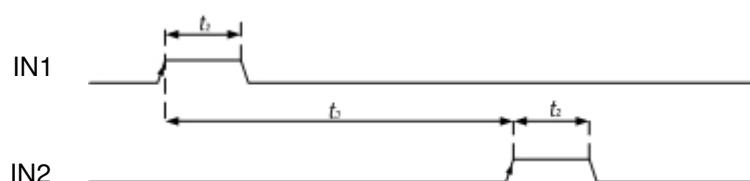
Input-Trigger 1:



When IN1 is high level, it's possible to read the transponder.

t_1 min 50 ms.

Input-Trigger 2:



The rising edge of IN1 starts reading

The rising edge of IN2 stops reading

t_2 min 5 ms
 t_3 min 100 ms

Input-Trigger 3: like Input-Trigger 1 with reversed edge-logic

Input-Trigger 4: like Input-Trigger 2 with reversed edge-logic

The “Buzzer” field specifies a particular behaviour of the buzzer connected to the I/O connector:

Buzzer Off: Buzzer disabled

Buzzer On Detection: Buzzer enabled when a transponders is detected.

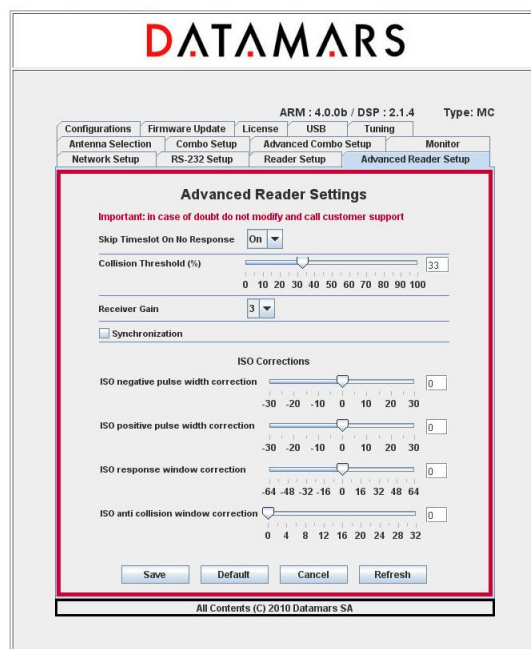
Buzzer Off: Buzzer enabled when the transmission is ON.

The “Reverse Order” field specifies the representation of the UIDs:

Reverse Order Off : UIDs are not reversed

Reverse Order On : UIDs are reversed

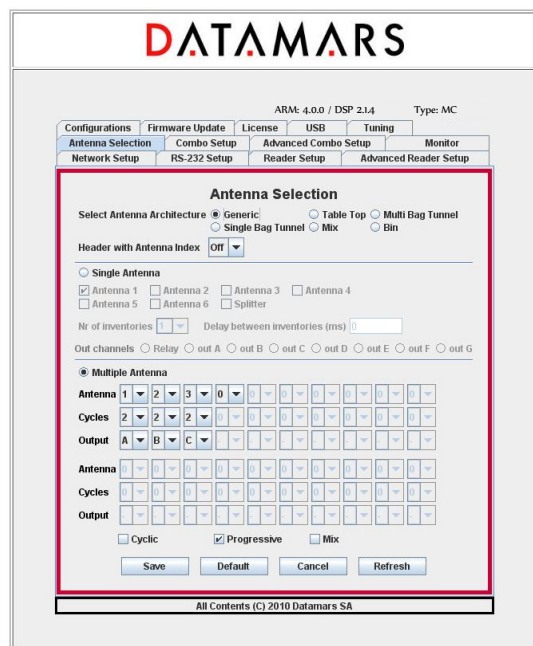
5.8 ADVANCED READER SETUP



This Tab contains fields affecting the performance of the reader depending on the architecture of the installation.

Those configuration-fields are reserved for technical purposes only and should **NEVER** be changed by customers. For more information please contact “Datamars – Support Team”.

5.9 ANTENNA SELECTION



The “Antenna Selection” tab allows users to specify which kind of antennas are connected to the reader and which output channels are active (just by clicking on the corresponding Radio-Buttons). The “Antenna Architecture” field allows the choice of Table Top-, Multi Bag Tunnel-, Single Bag Tunnel-, Mix-, Bin- and Generic- Antenna.

If the Table Top-Antenna architecture is selected together with **non-continuous mode**, the “**Nr of inventories**” field specifies how many inventories must be done while the “**Delay between inventories**” is the time between two consecutive inventories (in ms).

In such configuration, after read-command is received, the reader performs as many inventories as specified waiting in between for the specified delayed to expire. Then the system stops reading.

If the configured antenna architecture is any other than “Table-Top – non continuous”, those fields do not have any influence on the behaviour of the reader.

If you select “Generic Antenna” you also have to specify its architecture (single or multiple) and other working parameters. All other kinds of antennas are treated by the system assigning them default behaviours and configurations. In this way, the user does not need deep knowledge about technical aspects of the selected antenna.

NB: The hardware of Multi Bag Tunnel- and Single Bag Tunnel- is the same. The selection between these two options only activates two different default configurations specially suited for best performance.

Multi Bag Tunnel: Set this parameter if your Tunnel antenna must be able to process more than one bag at the same time.

Single Bag Tunnel: Set this parameter if your Tunnel antenna must process only one bag at a time. In this case you need to wait to put a new until the previous one is out.

Mix: Like “Single Bag Tunnel” but suited for reading a small number of tags (less than 10 tags per bag)

NB: If you have antennas from Datamars you just need to select the proper type and the system will do the rest for you.

How to configure a “Generic Multiple Antenna”:

If “Generic & Multiple Antenna” is selected, the user must configure the reading sequence (antenna seq.), the number of inventory cycles and select the output for each step.

To do that, the user is guided by the system preventing inconsistent input values.

To specify an antenna within the antenna-sequence, use the corresponding “Antenna Combo-Box” and select 1, 2, 3, 4, 5, 6, S (Splitter).

To specify the number of inventory cycles within the cycles-sequence, use the corresponding “Cycles Combo-Box” and select 1, 2, 3, 4, 5, 6, 7, 8 or 9.

To specify a digital output to be activated within the output-sequence, use the corresponding “Output Combo-Box” and select – (none), R (receiver channel), A, B, C, D, E, F or G.

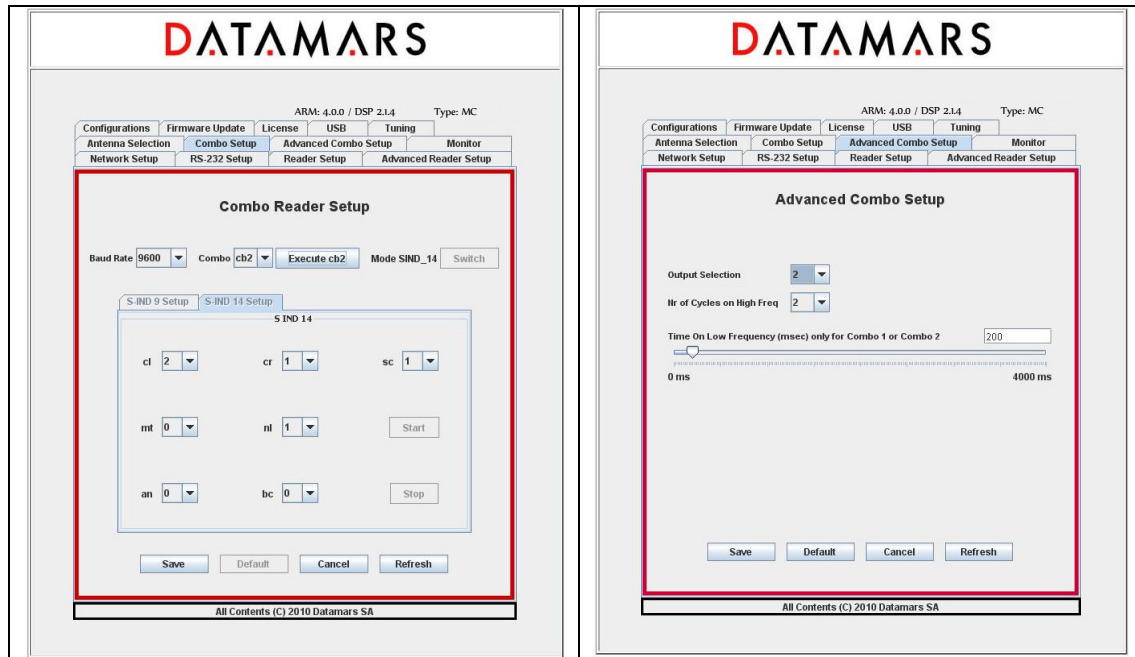
To delete a couple made of “antenna-cycles”, use either the corresponding “Antenna Combo-Box” (in the antenna-sequence) or the corresponding “Cycles Combo-Box” (in the cycles-sequence) and select 0.

To insert a new couple made of “antenna-cycles” in the middle of the sequence, select the “Antenna Combo-Box” at the position where the insertion is intended to be done and select I. A new couple is inserted and the following elements of the sequence are shifted.

To append a new couple made of “antenna-cycles”, use the “Antenna Combo-Box” at the very end of the sequence and select 1, 2, 3, 4, 5, 6, S (Splitter).

Header with Antenna Index: if this option is set, the UID of the tag is preceded by the index of the antenna having detected it.

5.10 COMBO READER SETUP – ADVANCED COMBO SETUP

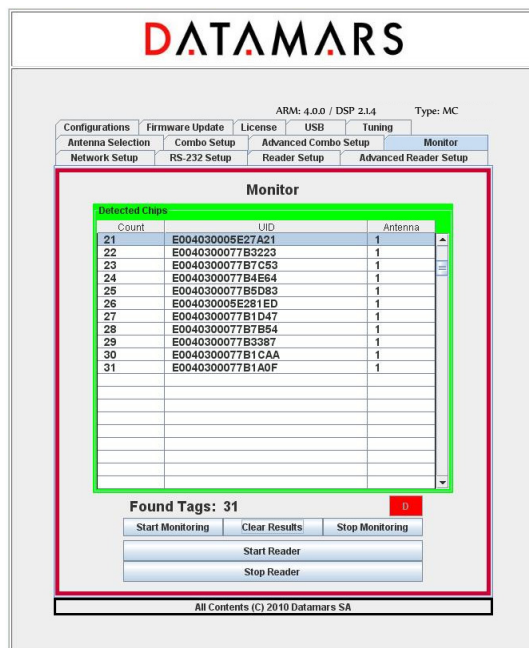


The “Combo Reader Setup” and “Advanced Combo Reader Setup” allow users to specify the properties of the “**low frequency**” reader and to detect its current working state. The “Baud Rate” field refers to the baud rate of the “low frequency” reader.

The “Combo Type” field allows users to modify the working-mode of the “low-frequency” reader. Just select the desired mode and the corresponding command is immediately sent to the “low frequency” reader (no need to press the SAVE button). Warning: this operation may take some seconds.

The “low-frequency” reader can be switched from s-ind9 to s-ind14 or vice versa (see low frequency manual) by pressing the “SWITCH”-button. If the current working state of the “low-frequency” reader does not allow this operation, the “SWITCH”-button is disabled and cannot be pressed. Depending on the current “s-ind mode”, a set of configuration parameters is displayed onto the tab. To know the meaning of these fields, read the R-IN 7500 manual.

5.11 MONITOR

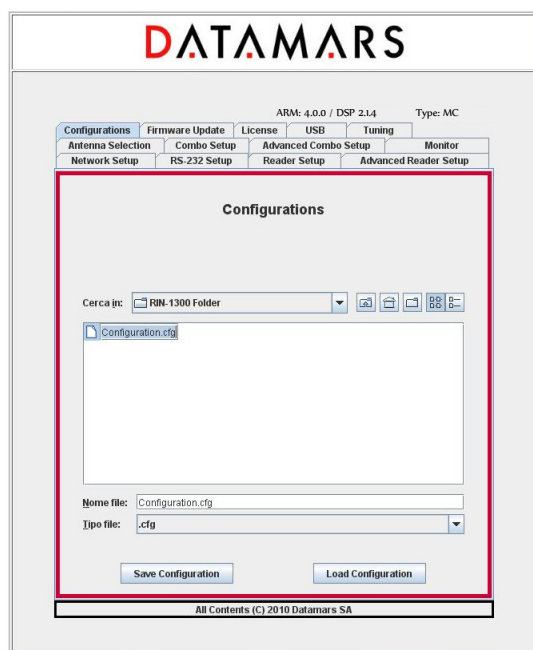


The monitor tab is used for verifying whether the reader is active or not.
 The “Start Reader” button makes the reader start its inventory cycles.
 The “Stop Reader” button makes the reader suspend its reading process.
 The “Start Monitoring” button permits to display the UIDs of the chips found by the reader.
 The “Clear Result” button clears the UIDs display.
 The “Stop Monitoring” button stops the display.
 The led “D” (detection) is green if the reader sends UIDs, red otherwise.

PLEASE NOTE:

UIDs are displayed only once: duplicated UIDs are not displayed again! This could give the impression that the reader does not work correctly but this is NOT true. Please, in this case press the “Clear Result” button. If you press the “Stop Reader” button, the reader stops its reading process. Please click this button only if you are sure that the suspension of the reader activities does not cause the loss of important data.

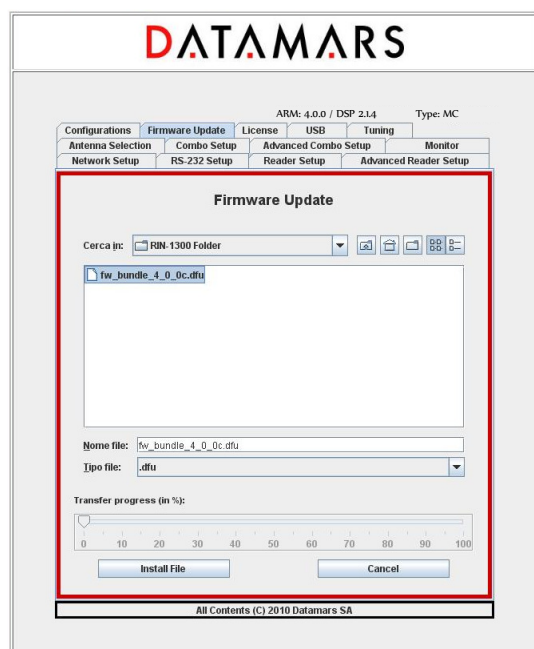
5.12 CONFIGURATIONS



The “R-IN1300 MC” reader offers a tool giving the user the possibility to save and/or reload configuration files. First of all, select the tab named "Configurations". To save the currently active configuration, select the destination folder using the navigator, write the destination file name in the related input field and then press the button "Save Configuration".

To load a previously saved configuration, select the folder and file using the navigator and then press the button "Load Configuration".

5.13 FIRMWARE UPDATE



The GUI-version running on the browser offers the user a tool to update the software of the “R-IN1300 MC” reader.



Firmware version 4.0.0 and later ones ARE NOT COMPATIBLE with older ones: FW3.5.5 or previous one cannot be updated to FW4.0.0 through the automatic procedure “Firmware Update”. Likewise, FW4.0.0 or later cannot be downgraded to an older version. Trying to force incompatible firmware upgrade would prevent the reader to start and Datamars customer support would be needed to restore its functionality.

First of all select the tab named "Firmware Update" and select the file containing the new software (delivered by Datamars SA) using the navigator and then click the “Install File” button. The new software is now transferred (copied) from the PC to the reader. A slider tells about the transferring process status.

If the transferring-process hangs or if the user notices that a wrong file has been transferred, the user can cancel the operation and remove the transferred file by clicking the “Cancel” button.

When the whole file has been completely transferred onto the reader, the user is prompted by a pop-up window asking to proceed with installation and activation of the new firmware. The user can confirm or cancel the operation.

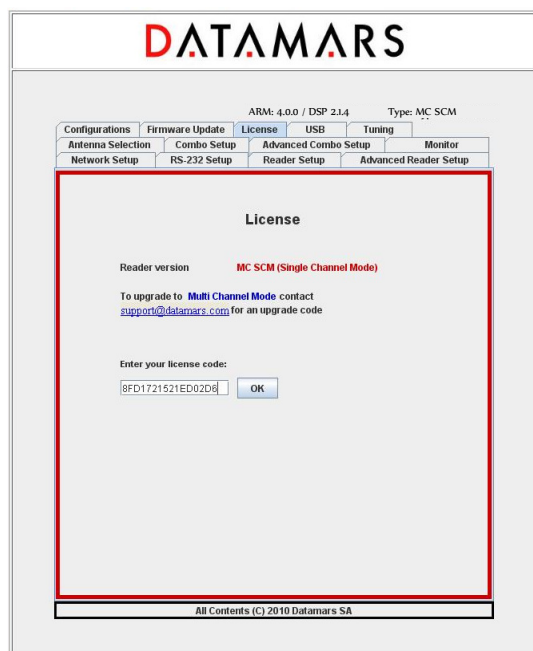
If the user decides to continue and to activate the new software, she/he MUST wait until the whole installation process is terminated. During the process the ‘HF’ Led blinks and it turns off ONLY when everything has been completed. Once the HF Led is off, the reader MUST be switched OFF and RESTARTED to load the new firmware.

Note: The installation of the new software can require a couple of minutes: during such period the reader MUST NOT BE TURNED OFF.

Note: While performing the firmware-update, the reader disables the Ethernet connection and the message “Connection lost” appears on the GUI.

Note: To preserve custom parameters configuration, before starting the firmware update, save back up configuration file as described in session 5.12. Once the firmware update has been completed, load the configuration in order to restore custom parameters.

5.14 LICENSE



The “License” tab allows users to enter the reader-specific license code. Click the link “support@datamars.com” to request the license code contacting Datamars. Enter the license code delivered by Datamars into the input-field and click OK.

5.15 USB SETUP

DATAMARS

ARM: 4.0.0 / DSP 2.1.4 Type: MC

Configurations Firmware Update License **USB** Tuning

Antenna Selection Combo Setup Advanced Combo Setup Monitor

Network Setup RS-232 Setup Reader Setup Advanced Reader Setup

USB Setup

USB usage:

Journal Format: ☒ CSV Journal Format ☐ Custom Journal Format

Separator between fields:
 Separator between lines:
 File Extension:

USB Memory Pen

☒ USB memory pen

Year: Month: Day:
 Hour: Minute: Second:

All Contents (C) 2010 Datamars SA

Select from the “USB usage” combo-box the desired functionality (serial disabled, serial emulation, mass-storage emulation). If “USB-Mass-storage Emulation” is chosen, the UIDs are written into a file (journal-file) whose format is configurable (CSV or custom).

Refer to chapter 6 for an exhaustive explanation about installing, using and manipulating the USB-serial and mass-storage emulation.

Refer to chapter 7 for an exhaustive explanation about the usage of the USB-Memory-Pen.

5.16 TUNING

DATAMARS

ARM: 4.0.0 / DSP 2.1.4 Type: MC

Configurations Firmware Update License USB **Tuning**

Antenna Selection Combo Setup Advanced Combo Setup Monitor

Network Setup RS-232 Setup Reader Setup Advanced Reader Setup

Tuning

NF Measure (remove all tags):

190

SNR Measure (put one ISO-15693 chip only):

All Contents (C) 2010 Datamars SA

This functionality is reserved for technical purposes and it should be needed by qualified technician only. For more information refer to chapter 8.

5.17 SYSTEM REQUIREMENTS

OS: MS Windows 98 or higher, MAC OS X, Linux

Software: Java 2 Runtime Environment v. 1.4 or higher.

Hardware: 32 MB of RAM, 50MB of free hard disk space.

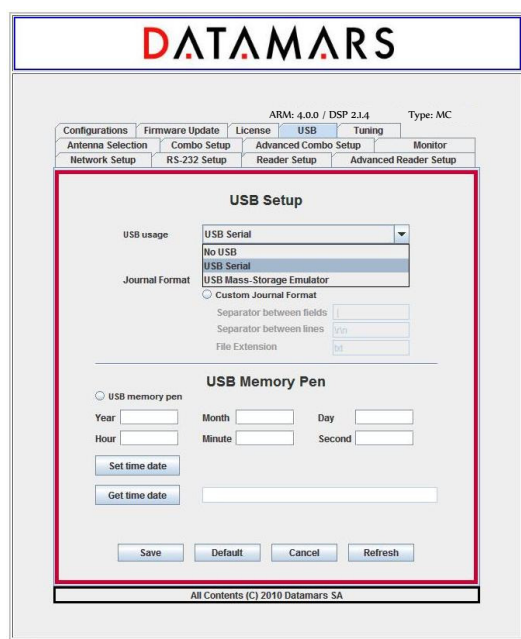
6 USB-DEVICE

This chapter describes how to correctly handle the USB-Device functionalities. Please, read this chapter carefully and follow strictly the described manipulations.

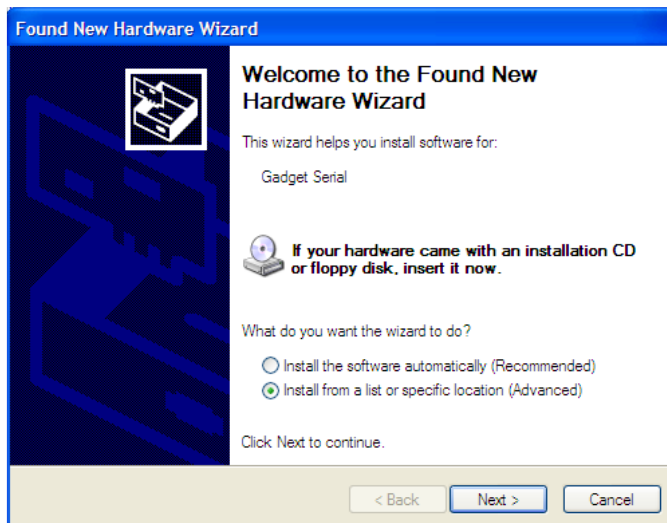
6.1 USB SERIAL EMULATION

6.1.1 FIRST USAGE

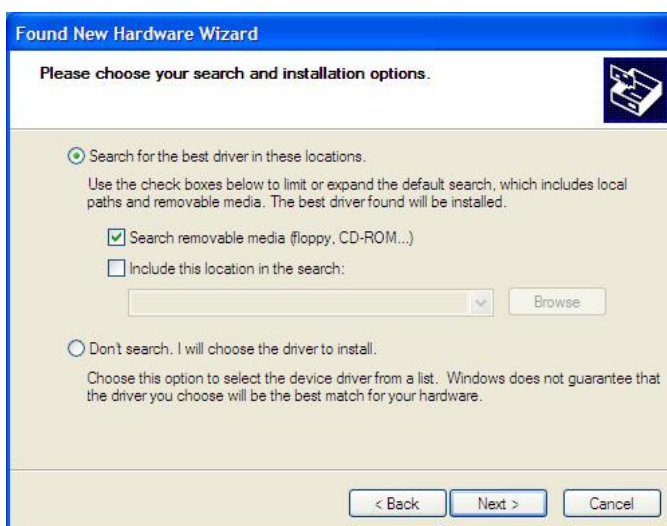
- Select the “**USB Serial**” functionality with *us1” (on terminal) or via GUI



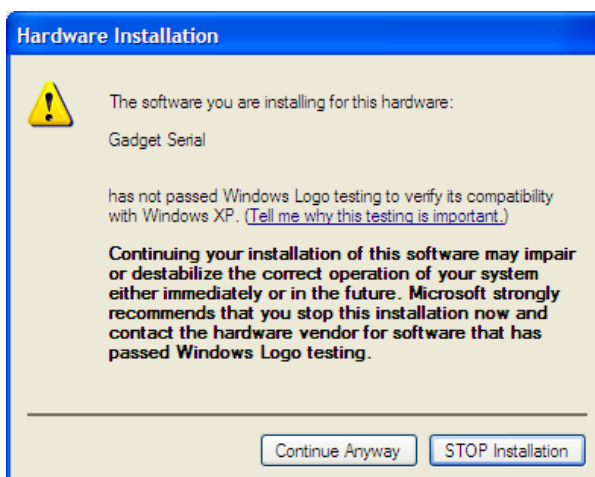
- **Plug in** the USB-cable and connect your PC with the “R-IN1300 MC Advanced” (USB-cable AB)
- The “**Found New Hardware Wizard**”-window appears automatically. Insert the delivered CD-Rom into the PC and select “**Install from a list or specific location (Advanced)**” and click “**Next**”



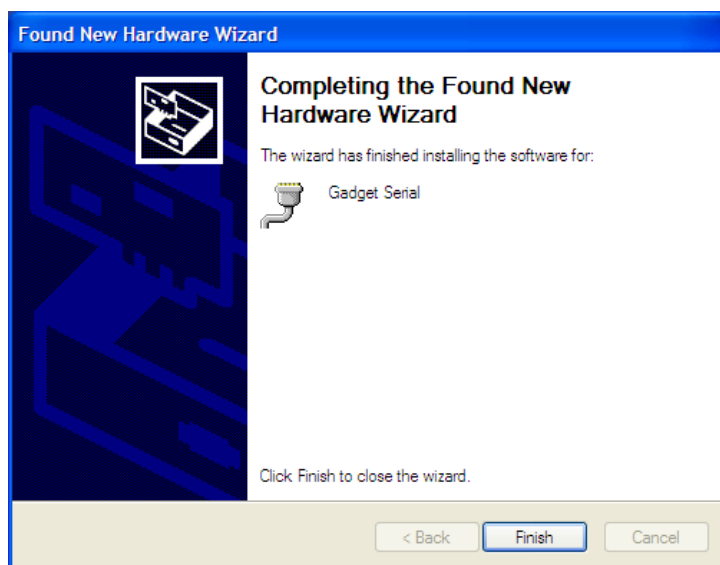
- Select **“Search the best driver in these locations”** and **“Search removable media(floppy, CD-ROM...)”** and then click **Next**



- Answer **“Continue Anyway”**



- Click **“Finish”**:

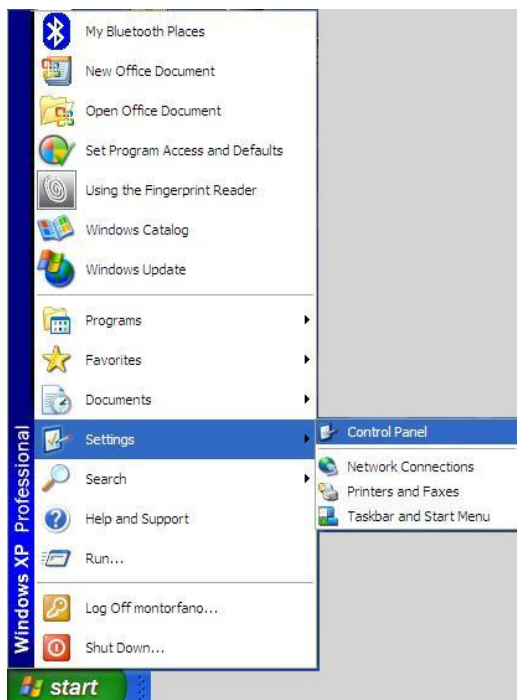


6.1.2 FURTHER USAGE

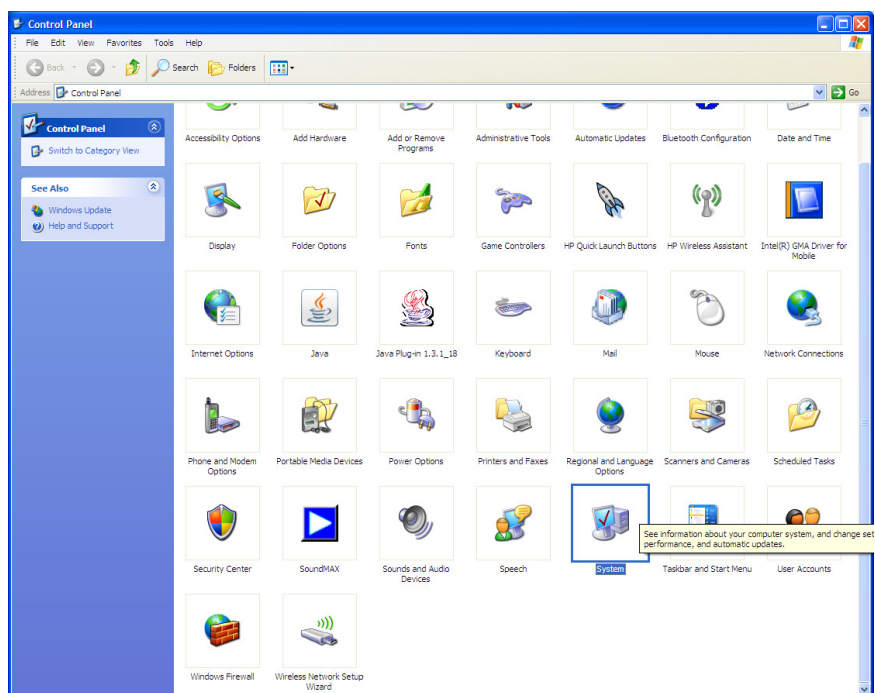
For further usage there is no need to install the USB Serial Drivers. Just specify that you intend to use the USB-Serial-Emulation and plug the USB-cable in.

6.1.3 HOW TO DISCOVER WHICH COM-PORT CORRESPONDS TO THE USB-SERIAL-EMULATION

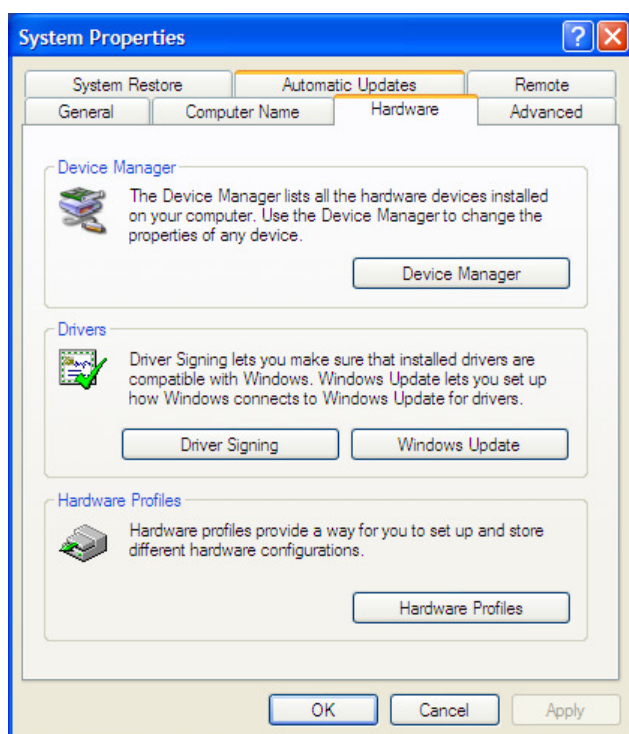
Open the **“control panel”**



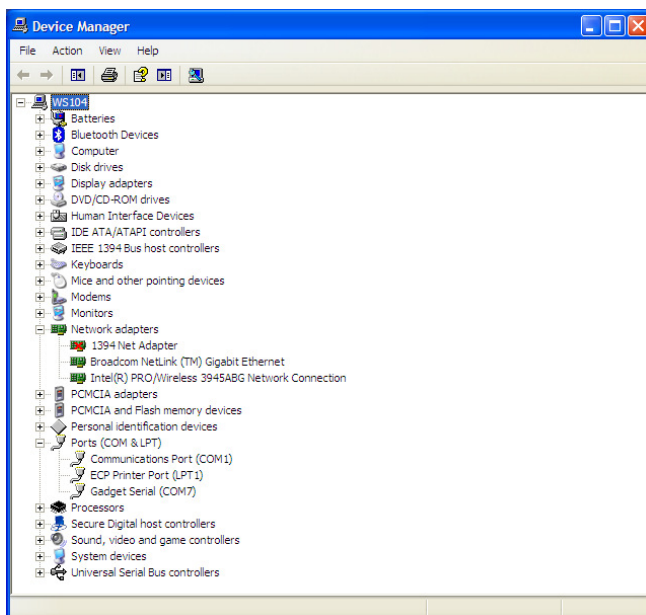
Select **“System”**



Select **“Hardware”** and **“Device Manager”**:



Select **“Ports”** to see which COM corresponds to the “USB-Gadget Serial”(ie: COM7).
Now you can open a terminal on “Gadget Serial” (ie: COM 7) **without need to specify baudrate, data-bits, parity-bit, stop-bit and flow-control.**

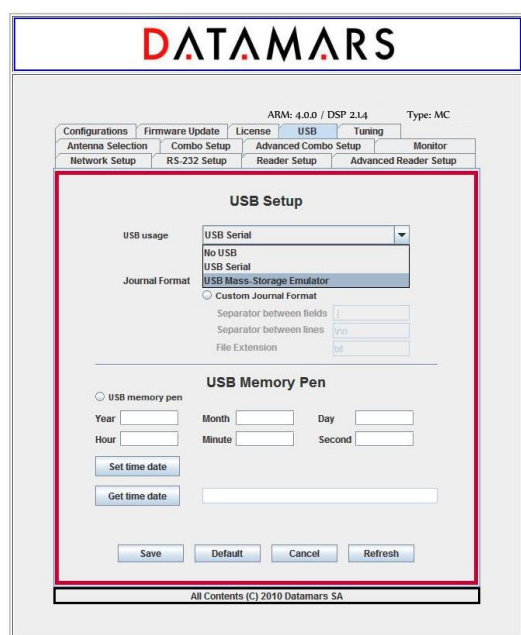


Note: If the USB-Cable is unplugged, the USB-Serial-Communication stops. If now you plug the USB-Cable in, the USB-Serial-Communication will NOT start! After unplugging, you have to close the terminal, plug the USB-Cable again and open a new terminal.

6.2 USB MASS STORAGE EMULATION

To use the mass storage emulation please follow carefully the following instructions.
At the beginning of the manipulation, the reader is assumed to be turned off.

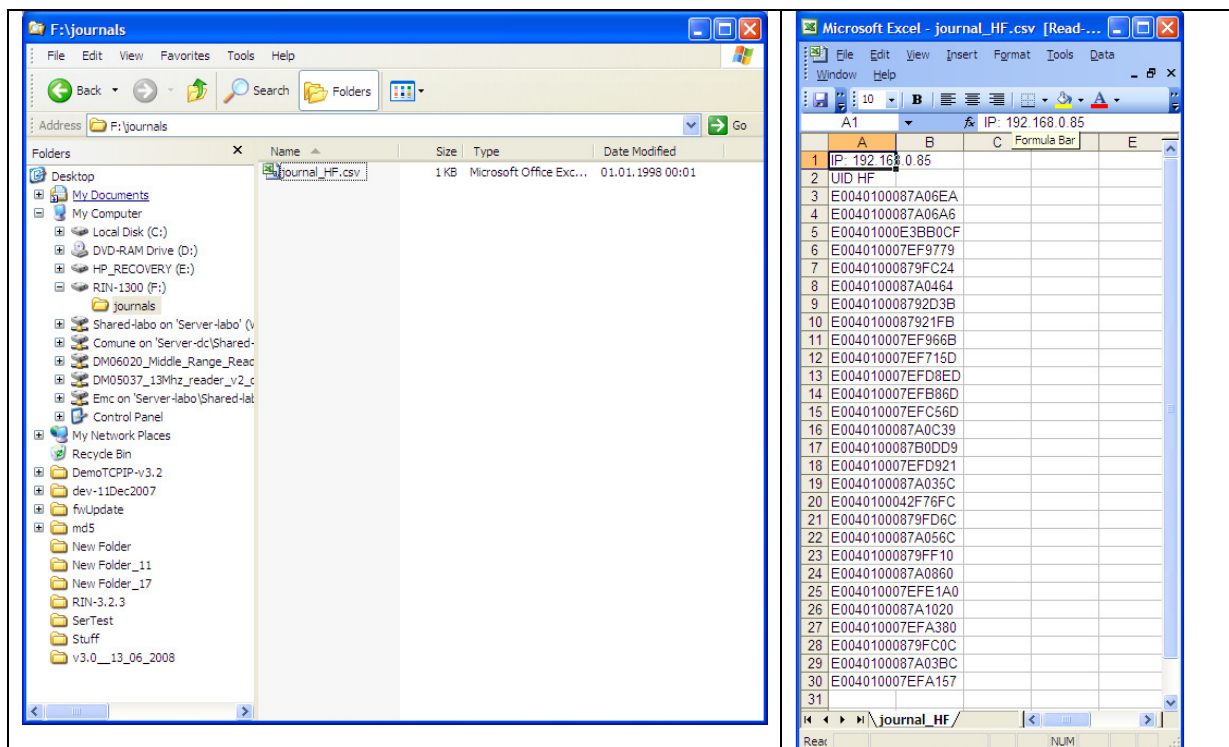
- Make sure that your PC and the “R-IN1300 MC Advanced” are **NOT** connected via USB-cable
- Turn the reader on
- If not yet selected, activate the “**USB Mass Storage Emulator**” functionality with *us2” (on terminal) or via GUI



- Start reading: the detected UIDs are written into the journal-file (duplicated UIDs are filtered – each UID is written only once)

- Stop reading
- Plug in the USB-cable and connect your PC with the “R-IN1300 MC Advanced” (USB-cable AB)
- For technical reason wait 4-5 seconds so that the system can prepare the journal-file.
- Find the journal-file: use Explorer (ie: Drive “F:\R-IN1300\journals\journal_HF.csvs”) Now **copy** the journal-file on your LocalDisk and open the copy.

Note: If you do not find the journal-file, unplug the USB-Cable and plug it in again until the system detects the presence of the file.



- Unplug the USB-Cable and turn the reader off
- Repeat the whole procedure from the beginning

Please note:

The USB-Cable can be plugged in ONLY after the reader has been stopped.
The journal file in the emulated USB-Mass-Storage should not be opened, edited or deleted.
The reader must be reset each time at the end of the procedure.

7 MEMORY PEN

The reader offers the possibility to use a memory-pen to store UIDs into a file called “inventory.txt”.

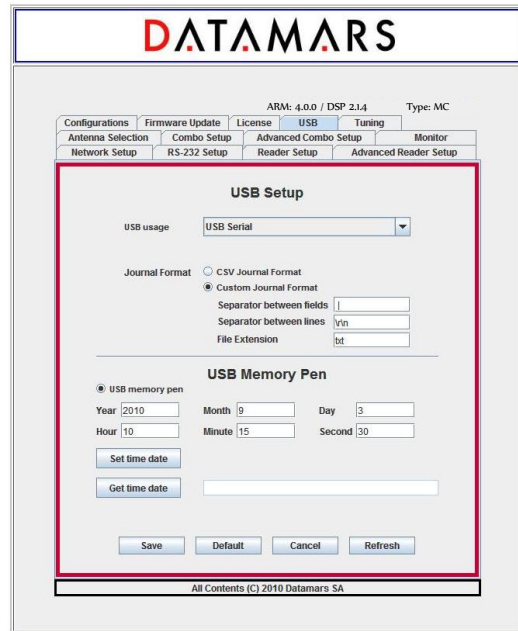
If this service is enabled, the UIDs detected during the reading-phase are both sent to the selected output devices (RS232 and/or Ethernet) and written into the memory-pen together with the detection-timestamp (mandatory) and the antenna-index (optional).

To activate this service, either “USB memory pen” field on the GUI had to be selected or “*mp1” in the RS232-terminal has to be typed.

To disable it, either the “USB memory pen” field on the GUI has to be cleared or “*mp0” in the RS232-terminal has to be typed.

The current date and time on the reader can be set and retrieved using the GUI or with the RS232-terminal typing respectively the command “*td[-DD-MM-YYYY-hh-mm-ss]” (set --- ex *td-31-08-2010-17-15-30) and “*td” (get).

Note: the system time and date must be set after each reboot of the reader.



After having enabled the memory-pen usage, the insertion of a memory-pen into the reader is mandatory.

Failing in doing so, the error led turns to red.

If the memory-pen is inserted, the error led remains green indicating that it is safe to start reading.

During the reading- and detection phase the error led blinks red indicating that it is not advisable to remove the memory-pen because of possible loss of data.

At the end of the reading and detection phase the error led stops blinking red signalling which it is safe to remove the memory-pen.

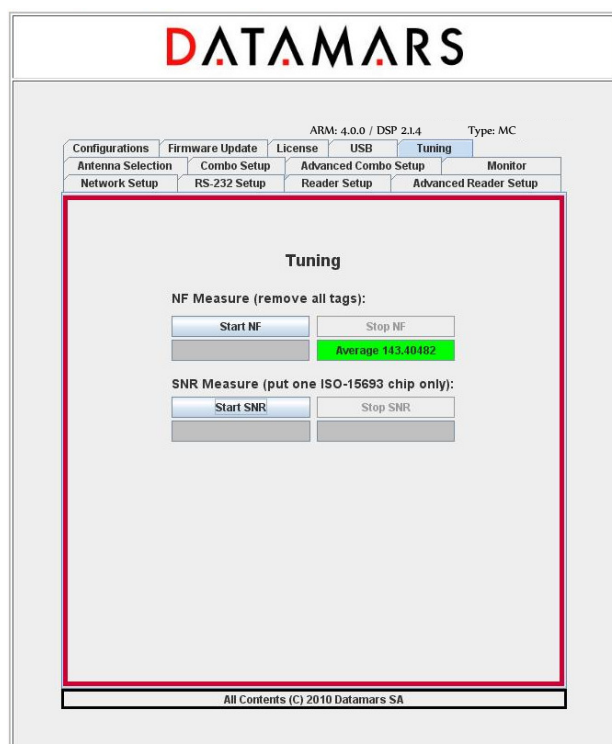
After removing the memory-pen, another one must be inserted into the reader to start another reading-phase.

8 TUNING

The noise-meter function only works in TableTop-Mode with ISO-15693 technology.

It is therefore possible that your current configuration needs to be modified. It is recommended to save your current configuration into a file on your PC, to restore the default configuration on the reader, perform the needed measurements and in case reload your specific configuration.

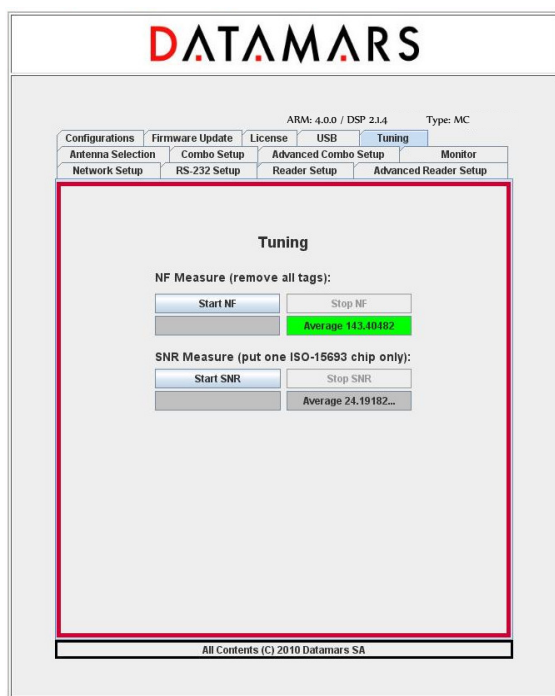
To start the noise floor (NF) estimation press the Start NF button. The value in the gray box starts to be updated in real time and the coloured box changes its colour in real time (green, yellow or red) according to the estimated noise. Please note that during this phase no tag must be in the magnetic field of the antenna.



To stop the NF measurement, press the STOP NF button. The average value is computed and depicted in the coloured box.

Once the noise floor is available, it is possible to compute the signal to noise ratio (SNR).

To start the SNR measure, press the Start SNR button and place only one ISO-15693 tag in the magnetic field of the antenna. In the gray box appears the estimated real time value. To stop, press the Stop SNR button.



The average value is computed and shown in the box below the Stop SNR button.

9 TECHNICAL SPECIFICATIONS FOR R-IN1300 MC

9.1 OPERATIONAL CHARACTERISTICS

The DATAMARS RFID reader “R-IN1300 MC” is an integrated analog system for RFID- Applications (RFID=radio frequency identification) which works at 13.56MHz. It allows reading data stored into ISO-RFID transponders or ISO-Labels at 13.56 MHz. Single- and Multi-read operation are supported. The communication between the reader and the transponder is based on the ISO 15693 (Part 1-3) protocol.

All transponders (contact less memories) are powered by a transmitted carrier radio wave at 13.56MHz and are compliant with the ISO 14443-B recommendation for the transfer of power and signals via radio transmission. For this purpose the reader “R-IN1300 MC” amplitude, modulates the data on the carrier using amplitude shift keying (ASK) and the tag replies by load modulating the data on the carrier.

Once the reader is connected to an appropriate client-network (via dedicated computer) it works based on the installed software like a server providing the received data from the transponders to the final client-application.

The service software helps to control and update the reader in user-friendly way.

“R-IN1300 MC” supports different antennas as well as multiple configurations.

9.2 ELECTRICAL CHARACTERISTICS

The technical specifications include only the High Frequency “R-IN1300 MC” and not the Low Frequency reader R-IN7500.

Electrical characteristics (without antenna)

POWER SUPPLY	AC 100-240V 1A 50-60 Hz
POWER CONSUMPTION	35 W
ANTENNA OUTPUT POWER	12 W

Technical characteristics

OPERATING FREQUENCY	13.56 MHz
OPERATING TEMPERATURE	0°C - 50°C / 32°F - 122°F
DIMENSIONS	220 x 135 x 245 (mm) / 8.66 x 5.31 x 9.65 (inches)
WEIGHT	4.0 kg
TRANSPONDER TYPE	ISO15693 (T-BT 1320, T-BT1315, T-BT1313, T-BT1311) I-Code 1
ANTI COLLISION	Yes
COMMUNICATION PROTOCOL	RS-232, USB, TCP/IP (Ethernet)

AUTO TUNING	No
ANTENNA TYPES	Table Top, Tunnel, Bin, Chute, others on request
READING SPEED	Depend on number of transponder and technology (up to 40/s)
READ/WRITE	Read / Write
EMC	High attenuation characteristics (~30÷60 dB)
IP PROTECTION DEGREE	IP51. Upon request: improved with gasket to IP54 (splash-resistant and dust-protected)
MAX. READABLE TRANSPONDERS	1000 pieces

**Hot**

With high power transmission the housing might become hot!

9.3 REGULATIONS

9.3.1 EQUIPMENT MODIFICATION

Equipment modifications not expressly approved by Datamars SA, CH-6930 Bedano, the party responsible for FCC compliance, are forbidden. Such modifications could void the user's warranty and authority to operate the equipment and cause hazardous conditions.

9.3.2 EN 300330-1/-2 (EUROPE)

The "R-IN1300 MC" system is a sending and receiving equipment and is in accordance with the R & TTE directive **EN 300 330-1/-2**. The "R-IN1300 MC" system fulfils the requirements of this regulation.

9.3.3 FCC (USA)

To comply with FCC part 15 rules in the United States, the system must be professionally installed to ensure compliance with the Part 15 certification. It is the responsibility of the operator and professional installer to ensure that only certified systems are deployed in the United States. The use of the system in any other combination (such as co-located antennas transmitting the same information) is expressly forbidden.

9.3.4 IC (CANADA)

The device has been designed to operate with the antennas listed below, and having a maximum gain of 2 dB. Antennas not included in this list or having a gain greater than 2 dB are strictly prohibited for use with this device. The required antenna impedance is 50 ohms.

List of antennas: Datamars antenna A-ST1330 TT

Please ask for more antennas which are not listed above.

In order to reduce potential radio interferences to other users, select the antenna type and gain as follows:

equivalent isotropically radiated power (e.i.r.p.) not higher than the permitted one for a successful communication.

Operation is subject to the following two conditions:

- (1) this device may not cause interference, and
- (2) this device must accept any interference, including interference that may cause undesired operation of the device.

9.3.5 CE CERTIFICATION

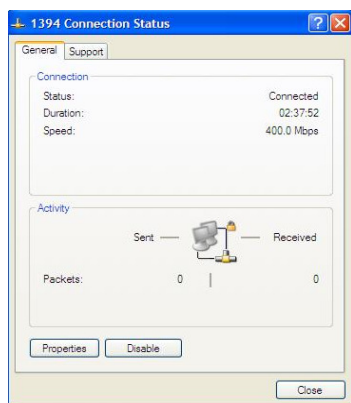
The system “R-IN1300 MC” is in accordance with the requirements of protection, which are defined in the regulation concerning the electromagnetic tolerability EN301 489-1, -3, emitted by the council for the harmonisation of regulations in the member countries. The European Community regulation for Low Frequency, EN 60950, is respected. The “R-IN1300 MC” system fulfils the requirements of this regulation.

9.3.6 WARRANTY

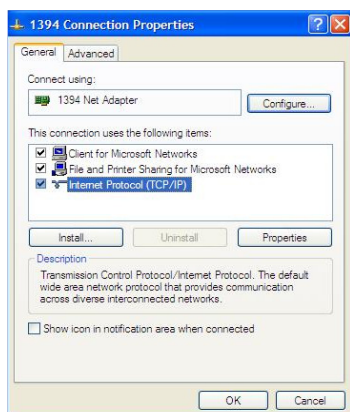
If the reader is opened by not certified personnel the warranty automatically expires and Datamars cannot guarantee the fulfilments of the above-mentioned regulations.

APPENDIX A — CONNECTING THE R-IN1300 MC TO A PC WITH A CROSS CABLE

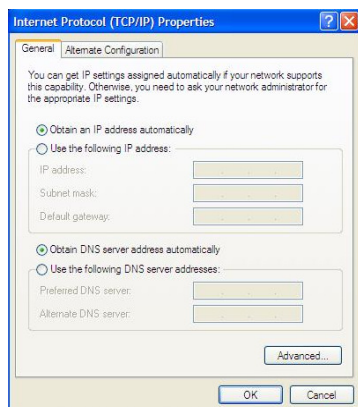
If the reader “R-IN1300 MC” is directly connected to a PC, you must still do following steps:
Open the “**Network Connections**” frame of Windows (Hint: Start -> Settings -> Network Connections) and double-click the entry corresponding to the connection you intend to use to communicate with the reader. You will see a similar frame:



Click the button “Properties” of the tab “General” to get access to the “**Connection Properties**” frame. You will see a similar frame:



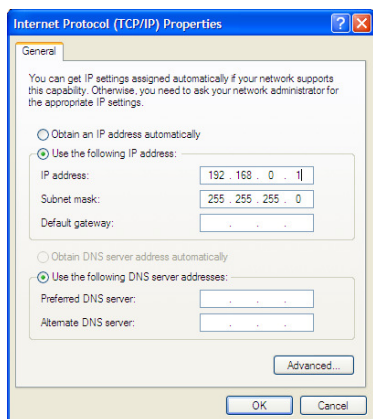
Highlight the “Internet Protocol (TCP/IP)” and click the “Properties” button to get access to the “**Internet Protocol (TCP/IP) Properties**” frame. You will see a similar Frame:



Note exactly the current configuration of the tab “General” in order to be able to restore it.

Click the “Use the following IP address” radio-button and specify an IP in the same range of the readers IP (i.e. 192.168.0.1), the subnet-mask (255.255.255.0). You can ignore the “Default Gateway”.

Leave the configuration tool confirming by clicking the OK button.



APPENDIX B - CODE LENGTH

In terminal mode you can configure the reader to return the UID code in 4 different formats:

1. ***cl0:**

Standard 16 characters UID

2. ***cl1 to *cl9:**

The reader returns only the right most digits of the original 16 digit UID.



With this format it is not possible to guarantee the uniqueness of the codes !

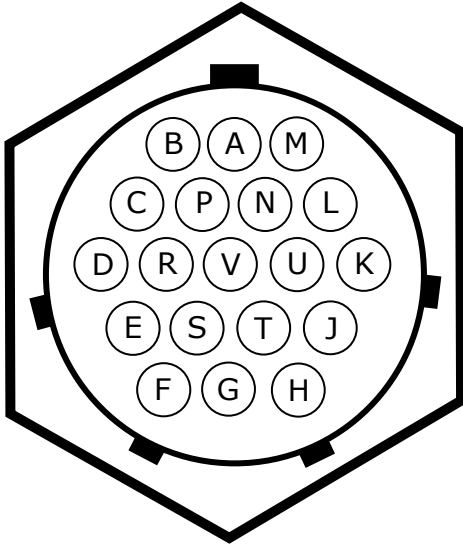
3. ***cl5:**

The reader returns 12 digits code in the fashion of “cl2”, but in this case the first (left) chapter ranges from “G” to “Z” instead of from “0” to “F”.



With this format it is not possible to guarantee the uniqueness of the codes !

APPENDIX C - I/O PIN CONFIGURATION



I/O PIN	FUNCTION
A	IN+1
B	IN-1
C	24V
D	GND 24V
E	POWER OUT A
F	POWER OUT B
G	Digital Out A4
H	Digital Out A1
J	Digital Out A2
K	Digital Out A3
L	K500 Common
M	K500 Open
N	Digital Out B1
P	Digital Out B2
R	Digital Out B3
S	IN+2
T	IN-2
U	IN+3
V	IN-3

BINARY INPUTS:

There are 3 binary inputs 5-48 VDC available for customer specific needs: A, B, S, T and U&V. The inputs are isolated through galvanic opto-couplers.

BINARY OUTPUTS:

Digital Outputs:

There are 7 digital npn-Open-Collector outputs available: G, H, J, K, N, P, and R.

The 'open collector' output is the unconnected Collector of an NPN transistor, made available to the external circuitry that switches to ground when active. This type of output can be used with a pull-up resistor to translate a logic level from one voltage to another or to drive bulbs, relays etc, that have a positive voltage on one terminal and require a switch to ground for activation.

All of them are software configurable. Connect the POWER OUT and the Digital out as shown in the picture. The 24V can be supplied by the internal power source (pin C, max 500mA) or an external power source. In this case connect the pin D to ground.

Note: when using output A1, A2, A3 protect the I/O connecting the POWER OUT B (I/O PIN F) to the VDC. When using output A4, B1, B2, B3 protect the I/O connecting the POWER OUT A (I/O PIN E) to the VDC.

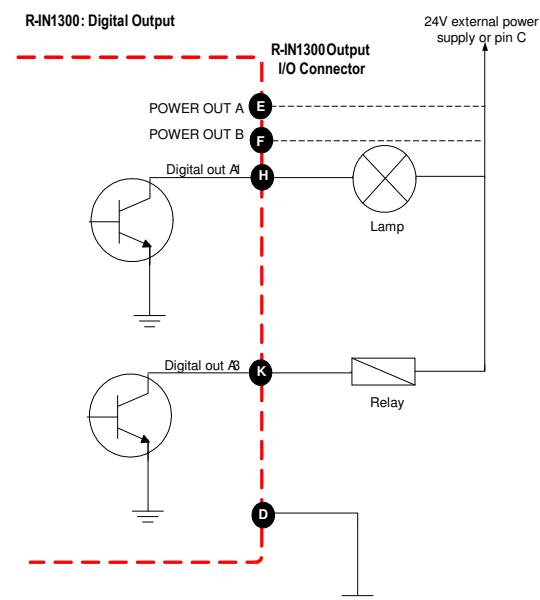
Relays:

There is a dry contact (L and M) to switch higher loads which can be controlled via software.

Max. Voltage switch 50V (DC/AC)

Max. Current switch 3A

Max. Power switch 60W, 120 VA



APPENDIX D - TROUBLESHOOTING

If you run into any problem using your reader, use the following table to troubleshoot the problem. If the problem persists, contact support at support@datamars.com or +41 91 935 73 80.

SYMPTOM	CAUSE AND/OR CORRECTIVE ACTIONS
There are transponders on the antenna but the software displays no UID.	<ul style="list-style-type: none"> Is the antenna cable connected to the reader? Is the antenna connected to the connector named "1"? Are the transponders you want to read specified in the options? Is the HF led on? <p>➔ If the four previous points didn't solve the problem turn the reader off, wait 10 seconds before turning the reader on again</p>
The red light "Antenna" is on.	<ul style="list-style-type: none"> Is the antenna connected to the right connector? <p>➔ Verify the selected channel.</p> <ul style="list-style-type: none"> Is the antenna placed near metallic objects? <p>➔ Move the antenna. Keep 1.5m distance from any metallic objects.</p>
Bad reading or low reading distance	<ul style="list-style-type: none"> The antenna is near metallic objects or noise source like electric motors? <p>➔ Try to move the antenna and the reader away from these objects.</p>
The reader reads transponder (Tag LED lights on) but the software displays no UID	<ul style="list-style-type: none"> Is the RS-232 cable well connected to the Host Interface? Is the software set 115200 bps – 8 – N – 1 – N? <p>➔ Verify the connection</p>